

INNOCENT BYSTANDERS? MONETARY POLICY AND INEQUALITY IN THE U.S.

Olivier Coibion
UT Austin
and NBER

Yuriy Gorodnichenko
U.C. Berkeley
and NBER

Lorenz Kueng
Northwestern University
and NBER

John Silvia
Wells Fargo

This Draft: May 1st, 2017

Abstract: We study the effects of monetary policy shocks on—and their historical contribution to—consumption and income inequality in the United States since 1980 as measured by the Consumer Expenditure Survey. Contractionary monetary policy systematically increases inequality in labor earnings, total income, consumption and total expenditures. Furthermore, monetary policy shocks account for a non-trivial component of the historical cyclical variation in income and consumption inequality. Using detailed micro-level data on income and consumption, we document some of the different channels via which monetary policy shocks affect inequality, as well as how these channels depend on the nature of the change in monetary policy.

Keywords: Monetary policy, income inequality, consumption inequality.

JEL codes: E3, E4, E5.

The authors acknowledge the financial support of the Global Interdependence Center and are grateful to Stefania Albanesi, Jihad Dagher, Pierre Jaillet, Ricardo Reis, Aysegul Sahin and anonymous referees for comments. We thank Peter Ireland for sharing his data. The views in the paper are those of the authors and do not necessarily represent those of Wells Fargo.

I Introduction

With the level of income inequality in the U.S. rising to record levels in recent years, popular concern with this question has grown, as illustrated for example by the Occupy Wall Street movement. The topic of inequality has even breached the walls of the central banking community, and a number of monetary policymakers have departed from their traditional focus on aggregate considerations to discuss the potential distributional effects of monetary policy actions (Mersch 2014, Bullard 2014, Forbes 2015, Bernanke 2015). But how even typical monetary policy decisions, much less quantitative easing or forward guidance, affect economic inequality is a priori ambiguous because of the number of channels through which these actions affect agents. In this paper, we show that contractionary monetary policy shocks by the Federal Reserve have historically been followed by persistent increases in income and consumption inequality, quantify their contribution to historical changes in inequality, and provide preliminary evidence on some of the channels underlying these distributional consequences of monetary policy.

To characterize the distributional effects of monetary policy, we focus initially on the dynamic responses of measures of consumption and income inequality to monetary policy shocks identified as in Romer and Romer (2004). Our measures of inequality come from detailed household-level data from the Consumer Expenditure Survey (CEX), available quarterly since 1980. This high frequency then enables us to apply standard time series methods to test whether monetary policy has redistributive effects. The CEX also allows us to consider different inequality measures (Gini, 90-10th percentiles, cross-sectional standard deviations) for labor income, total income, consumption and total expenditures. For every variable and measure of inequality, we can reject at the 5% level the null hypothesis that monetary policy shocks have no distributional effects over the five years following the shock, and can do so at the 1% level for all but one of the measures of earnings inequality. A contractionary monetary policy shock *raises* the observed inequality across households in income, labor earnings, expenditures and consumption. These results are robust to the time sample, such as dropping the Volcker disinflation period or all recession quarters, with only earnings inequality displaying some sensitivity. They are also largely invariant to controlling for household size and other observable household characteristics such as age, education and family size.

The economic magnitudes, however, are somewhat ambiguous. First, many of the point estimates are relatively imprecise and encompass magnitudes ranging from small to large effects of monetary policy on inequality. This reflects a number of factors: the relatively short time series involved, the fact that monetary policy shocks have been relatively small for much of the sample, and the noise in high-frequency measures of inequality based on relatively small cross-sections. Second, the implied economic effects

differ markedly across variables: forecast error decompositions indicate that monetary policy shocks account for under 5% of the variance of earnings inequality, roughly 10-15% of the variance of income inequality at longer horizons, and around 20% of the variance of consumption and expenditure inequality. Historical decompositions also paint a mixed story. The large monetary policy shocks of the Volcker disinflation appeared to play a significant role in driving the dynamics of each type of inequality in the early 1980s, but the effects of the subsequent smaller monetary shocks had visible cyclical effects only on income and expenditure inequality, and even those are relatively limited in size. Third, monetary policy shocks by construction cannot explain the trends in economic inequality over this time period. While these trends have been the main characteristic of the inequality dynamics that previous research has focused on, we restrict our analysis to the narrower question of cyclical variation in inequality.

While the CEX data provide the necessary higher frequency variation (as opposed to the annual data available from the Internal Revenue Service (IRS) used by Piketty and Saez (2003) and others) needed for time series analysis, these data have a number of important limitations. First, the CEX does not include the very upper end of the income distribution (i.e. the top 1%) which has played a considerable role in income inequality dynamics since 1980 (CBO 2011). Second, since the CEX is a survey, there is more measurement error in individual responses than in administrative data. Third, as the cross-section is much smaller than administrative data like IRS tax returns, there is additional sampling error introduced into inequality measures. Finally, this smaller cross-section limits our ability to decompose the sample into subgroups and therefore constrains us in identifying precisely the channels through which monetary policy affects different subsets of the population.

However, we can provide some evidence on the channels through which monetary policy affects the distribution. One such channel is a differential response of labor earnings. While overall inequality in labor earnings responds little to monetary policy shocks, this result masks some underlying distributional heterogeneity. After a contractionary monetary policy shock, upper income households (90th percentile) see their labor incomes rise on average relative to the median household, but so do low income households (10th percentile), at least temporarily. This leads to a widening of the earnings distribution at the upper tail but a condensing of the distribution at the lower tail, i.e. the earnings distribution becomes more skewed as in Guvenen et al. (2014). There is thus some evidence for an earnings heterogeneity channel, even though its effects on the second moments of the distribution are small.

The effects of monetary policy shocks on total income inequality are larger than those for inequality in labor earnings, a feature which likely reflects the income composition channel - the fact that households may receive their incomes from different sources. We find that the incomes of households at the 90th percentile rise somewhat relative to the median household, while households at the 10th percentile

see their relative incomes fall particularly sharply. This is consistent with the fact that low income households receive a much larger share of their income from transfers instead of labor earnings than other groups, and real wages rise relative to transfers after monetary shocks. We also find that financial income rises sharply after monetary policy shocks. Because the top 1% of the income distribution receive a disproportionate share of their income from financial income (CBO 2011), our baseline results on income inequality are likely a lower bound since they exclude the top 1%.

Unlike the heterogeneity in income inequality, heterogeneity in consumption and expenditure is driven primarily by the upper end of the distribution: those at the 90th percentile see a much larger rise in consumption and expenditures relative to the median household than the relative decline seen by those at the 10th percentile. In fact, the relative changes in consumption at the upper end of the distribution are significantly larger than their relative changes in income, which suggests a role for channels other than income via which monetary policy might affect consumption decisions. These include the portfolio channel (households hold different financial assets), the savings redistribution channel (savers and borrowers are differentially affected by monetary policy), and the financial segmentation channel (households have different access to financial markets and instruments).

Because the CEX does not include reliable measures of household wealth, it is difficult to identify and quantify these individual channels. For example, in the absence of consistent measures of the size of household currency holdings or financial market access in the CEX, we cannot directly quantify the specific (money holding) portfolio channel emphasized by Albanesi (2007) or the financial market segmentation channel in Williamson (2009). However, in the case of the savings redistribution channel, we provide evidence of wealth transfers by identifying high and low net-worth households following the characterization of Doepke and Schneider (2006), namely that high net-worth households are older, own their homes, and receive financial income while low net-worth households are younger, have fixed-rate mortgages and receive no financial income. While the average responses of total income and labor earnings are broadly similar across the two groups, consumption and, to a lesser extent, total expenditures rise significantly more for high net-worth households than low net-worth households after contractionary policy shocks.

Finally, we consider the sensitivity of these results to the nature of the monetary policy innovation. Specifically, we focus on changes in the Fed's inflation target, identified either as in Coibion and Gorodnichenko (2011) or as in Ireland (2006). Permanent decreases in the inflation target are also associated with higher levels of labor earning, total income, expenditure and consumption inequality. While historical changes in the Fed's inflation target account for a smaller fraction of the forecast error variance than broader measures of monetary shocks for each form of inequality, changes in the inflation

target can account for the vast majority of the dynamics of inequality over the early to mid-1980s, indicating that the Volcker disinflation period likely played a particularly important role in accounting for the evolution of economic inequality during this time period.

These results are noteworthy for several reasons. First, the potential contribution of monetary policy to inequality has received relatively little attention in the economics literature (Romer and Romer (1998) is an early exception).¹ Understanding and quantifying the sources of inequality is a first step to determining what kinds of policies, if any, are most appropriate to address it. Second, the heterogeneity in consumption and income responses across households, as well as the channels underlying them, are of immediate relevance to monetary economists and policymakers for understanding the monetary transmission mechanism.² In addition, some research has linked rising inequality to credit booms and financial crises (e.g. Rajan 2010, Kumhof et al. 2015), therefore suggesting a potential link from inequality to macroeconomic stability. Third, there is a growing macroeconomics literature integrating heterogeneous agents and distributional effects into New Keynesian models to revisit optimal fiscal and monetary policy design.³ Our results provide a rich set of stylized facts about the conditional responses of income, earnings and consumption patterns across households to monetary policy shocks that can be used to calibrate and differentiate between different classes of heterogeneous agent models, in the same spirit as the use of monetary policy shocks by Christiano et al. (2005) to estimate the parameters of New Keynesian models. Finally, recent work (e.g. Heathcote et al. 2010) has emphasized not only the cyclical component to economic inequality but also the variation in inequality across business cycle episodes. With changes in monetary policy having been proposed as a potential contributor to the Great Moderation (e.g. Clarida et al. 2000), one can naturally consider monetary policy as also affecting cyclical inequality patterns.

The paper is structured as follows. Section 2 discusses the CEX, the construction of inequality measures and their unconditional properties. Section 3 presents the main results on the effects of monetary policy shocks on income, labor earnings, expenditure and consumption inequality. Section 4 provides evidence on the channels through which monetary policy shocks affect inequality while section 5 considers the implications of changes in the inflation target. Section 6 concludes.

¹ Subsequent work has extended our approach to countries other than the U.S. For example, Mumtaz and Theophilopoulou (2016) similarly find that contractionary monetary policy shocks raise consumption and income inequality in the U.K. while Villareal (2014) extends the analysis to Mexico. In a cross-country study, Furceri et al. (2016) document that contractionary monetary policy shocks lead to increased inequality.

² In subsequent studies, Wong (2015) and Cloyne et al. (2016) similarly exploit micro-data on household finances to study the monetary transmission mechanism.

³ Examples include Gornemann et al. (2014), Guerrieri and Lorenzoni (2015), Luettticke (2015), Auclert (2016), Kaplan et al. (2016), and McKay and Reis (2016).

II Measuring Inequality

In this section, we briefly describe the Consumer Expenditure Survey and the construction of measures of inequality for total income, wage income, consumption and total expenditures.

2.1 The Consumer Expenditure Survey

The Consumer Expenditure Survey (CEX) is the most comprehensive data source on household consumption in the U.S. and is used for constructing weights of the Consumer Price Index (CPI). The CEX, which is provided by the Bureau of Labor Statistics (BLS), consists of two separate surveys: the Interview Survey and the Diary Survey. In this study we only use data from the Interview Survey since the Diary Survey covers only expenditures on small items that are frequently purchased, mostly related to food, and the frequency of shopping trips has been declining in the U.S. since 1980 (Coibion, Gorodnichenko and Koustas, 2017). The Interview Survey in contrast provides information on up to 95% of the typical household's consumption expenditures. The CEX is a monthly rotating panel, where households are selected to be representative of the US population and is available on a continuous basis since 1980. About 1,500-2,500 households are surveyed in any given month. Each household is interviewed once per quarter, for at most five consecutive quarters, although the first interview is used for pre-sampling purposes and is not available for analysis. In each interview, the reference period for expenditures covers the three months prior to the interview month. However, the within-interview variation is much lower than the between-interview variation because the BLS processes many individual expenditure categories assigning a third of the reported spending to each of the three months. Moreover, many households also seem to smooth their reported three-month expenditures equally over the three months. While these three-monthly periods do not coincide with calendar quarters and monthly spending can include information from periods outside a given calendar quarter, we aggregate monthly expenditures into quarterly expenditures to maximize the size of the sample and thus reduce sampling error in the resulting series as well as to make the resulting series conformable with other macroeconomic variables. In robustness checks, we explore alternative aggregation approaches and find similar results. In short, “household time” is quarterly.

We define household consumption as the sum of non-durables (e.g. food and gasoline), services, and expenditures on durable goods (e.g. furniture, jewelry). We also construct a broader measure of household expenditures by adding mortgage and rent payments, health expenditures, education spending

and other expenses to household consumption levels.⁴ As recommended by the BLS, we sum expenditures that occur in the same month but are reported in different interviews. Income data is asked in the first and last interview, and financial data is only asked in the last interview. The reference period for income flows covers the twelve months before the interview. All nominal variables are deflated using the CPI-U and survey sample weights are consistently applied. To reduce the influence of outliers, we winsorize income and spending variables at bottom and top 1 percent.⁵

Much work has been devoted to assessing the quality of the CEX relative to other data. Heathcote et al. (2010), for example, compare income inequality data in the CEX with equivalent measures from the Panel Study of Income Dynamics (PSID) and the Current Population Survey (CPS). They find strong comovement among pre-tax earnings inequality measures from all three surveys. Attanasio (2003) and Attanasio et al. (2004) similarly document the consistency of wage inequality in the CEX and the CPS. More concern has been raised with respect to underreporting of consumption in the CEX. For example, Krueger et al. (2010), Aguiar and Bils (2015) and Attanasio et al. (2012) document that the CEX underreports consumption relative to aggregate data and that this underreporting has become more severe over time. On the other hand, Bee et al. (2012) compare reported consumption spending data in the CEX to comparable data from the national income accounts data and find that the CEX data conform closely to aggregate data for large consumption categories. For our purposes, the potential underreporting of consumption in the CEX is less of a concern, since we will focus on cyclical fluctuations in consumption inequality. In addition, our empirical specifications will focus on changes in inequality rather than levels. Nonetheless, the potential limitations in the quality of the CEX survey data are an important caveat to bear in mind.

2.2 Measures of Inequality

Given the availability of household data on both consumption and income, the CEX allows us to study the behavior of both forms of inequality. To do so, we focus on three ways of measuring each form of inequality: Gini coefficients of levels, cross-sectional standard deviations of log levels, and differences between individual percentiles of the cross-sectional distribution of log levels.⁶ The Gini coefficient

⁴ We correct sample breaks due to slight changes in the questionnaire of the following variables: food at home (1982Q1-1988Q1), personal care services (2001Q2), and occupation expenditures (2001Q2). To further improve the quality of the data, we drop the following observations: interviews with more or less than three monthly observations; households reporting zero food or total expenditures; and observations with negative expenditures where there should not be any.

⁵ See Appendix B for more details on how we process CEX data.

⁶ All of our baseline measures of inequality are raw, i.e. do not control for any household characteristics like the number of household members, age, education, etc. This is because some of the channels by which monetary policy might affect inequality could be systematically related to some of these observables. For example, the redistribution

has long been used to measure inequality and summarizes the extent to which a variable is equally allocated across different components of the distribution. In addition, we will also use the cross-sectional standard deviation of log values. Taking logs diminishes the sensitivity to outliers but requires us to drop observations equal to zero, in contrast to the Gini coefficient. Finally, we use the difference between the 90th percentile and the 10th percentile of the log levels in each distribution, which also requires the elimination of observations with values of zero. However, the percentile differential is less sensitive to extreme observations in the tails of the distributions.

Given the detailed data in the CEX, we will consider two forms of inequality for income and consumption each. On the income side, we first construct measures of labor earnings inequality across households. Given the survey nature of the data, the advantage of labor earnings is that they are likely to be known with the highest precision by households relative to other forms of income. The disadvantage is that labor income is only one component of most households' income. As a result, we also construct measures of total income inequality based on labor earnings as well as financial income, business income and transfers for each household. Because individuals in the CEX are asked about their income only in the first and last quarters of their participation in the survey, the sample used to construct income inequality measures each quarter is only a subset of the total population in the survey that period. We will focus primarily on pre-tax measures of total income, although we also present after-tax income inequality measures and show that our results are robust to this alternative measure.⁷ Appendix Table 1 reports correlations among the different measures of inequality for both income and labor earnings: all correlations are quite high, with those for income being 0.89 or above over the entire sample from 1980Q1 to 2008Q4.

Similarly, we construct both a narrow and broad measure of consumption inequality. The narrow measure, which we refer to as consumption inequality, includes the same categories as in Parker (1999). Consumption goods in this category include non-durables, services, and some durable goods (household appliances, entertainment goods like televisions, furniture) but do not include large durable purchases such as house and car purchases. We also define a broad measure of consumption, which we refer to as total expenditures and which includes the previous definition of consumption as well as mortgage payments, purchases of cars, medical supplies and services, and tuition and books for

of wealth from borrowers to savers should likely be related to the age of households. Controlling for age would make it more difficult to identify this kind of channel. Similar logic applies to other household characteristics. However, while our baseline measures do not control for any household observables, we consider a number of robustness checks in which we do control for household characteristics.

⁷ Following Kueng (2012) we compute tax burdens using the TAXSIM calculator of the NBER; see Feenberg and Coutts (1993). The code is available at <http://www.nber.org/~taxsim/to-taxsim/cex-kueng>.

schooling among others. In contrast to income measures, consumption and expenditure data for individuals in the survey is measured every survey wave, so consumption and expenditure inequality measures use the entire population in the survey each period subject to the caveats discussed in section 2.1. For both consumption and expenditures, we aggregate all reported purchases within each definition at the household level, then construct inequality measures across households. Appendix Table 1 documents high correlations across measures of expenditure inequality, ranging from 0.75 to 0.89. Correlations among the consumption measures are slightly smaller, ranging from 0.79 to 0.43.

2.3 Unconditional Properties of Inequality Measures

Figure 1 plots the historical inequality measures of income, labor earnings, expenditures and consumption inequality measures from the CEX based on the cross-sectional standard deviation (Panel A), Gini coefficient (Panel B) and the 90th to 10th percentile differential (Panel C), averaged over the previous and subsequent quarter to illustrate more clearly business cycle and low-frequency variations. Consistent with results documented in the literature (Krueger and Perri 2005), our measures of total income inequality are all trending up over time. A similar pattern occurs for labor earnings inequality when measured using the Gini coefficient but not when measured using the cross-sectional standard deviation nor the 90th – 10th percentile differential, a feature of the data also documented in Heathcote et al. (2010). There is a sharp increase in all forms of inequality in the early 1980s. Income inequality rises over the course of the 1990s but not consumption or expenditure inequality measures. Finally, there is a noticeable decline in expenditure inequality over the course of the 2000s despite there being no such decrease in income inequality.

The figures therefore reveal some evidence of cyclical behavior in inequality measures, consistent with Heathcote et al. (2010). Table 1 presents unconditional correlations between inequality measures and quarterly inflation, the unemployment rate and the Federal Funds rate. All series are HP-filtered prior to measuring correlations so that the latter primarily reflect business cycle fluctuations rather than trends. Correlations of different forms of inequality with the inflation rate are very small and somewhat negative. Similar results obtain with interest rate correlations. Labor earnings inequality is weakly positively correlated with the unemployment rate and negatively with inflation. Expenditure and consumption inequality are more strongly negatively correlated with the unemployment rate. This could be interpreted as being consistent with a wealth channel, whereby even if income inequality varies little with the business cycle, cyclical fluctuations in asset prices have significant effects on wealth holdings of individuals, leading to lower consumption and expenditures of the wealthy during

recessions.⁸ Overall, however, the unconditional correlations do not point toward very strong links between business cycles and inequality patterns.

III Effects of Monetary Policy Shocks on Inequality

In this section, we present baseline results for the effects of monetary policy shocks on measures of inequality. We first discuss the construction of monetary policy shocks, then present results documenting the effects of these shocks on different forms of inequality in the U.S., as well as a number of robustness checks. We then present results on the economic importance of monetary policy for inequality dynamics.

3.1 The Identification of Monetary Policy Shocks

To characterize the effects of monetary policy (MP) on inequality in the U.S., we follow Romer and Romer (2004, RR henceforth) to identify innovations to monetary policy purged of anticipatory effects related to economic conditions. RR first construct a historical measure of changes in the target Federal Funds rate (FFR) at each FOMC meeting from 1969 until 1996. Using the real-time forecasts of the Fed staff presented in the Greenbooks prior to each FOMC meeting (denoted by F), RR construct a measure of MP shocks from the component of policy changes at each meeting that is orthogonal to the Fed's information set. Specifically, they estimate

$$\Delta f f_m = \alpha + \beta f f b_m + \sum_{i=-1}^2 \gamma_i F_m \Delta y_{m,i} + \sum_{i=-1}^2 \lambda_i (F_m \Delta y_{m,i} - F_{m-1} \Delta y_{m,i}) + \sum_{i=-1}^2 \varphi_i F_m \pi_{m,i} + \sum_{i=-1}^2 \theta_i (F_m \pi_{m,i} - F_{m-1} \pi_{m,i}) + \mu_i F_m u e_0 + \varepsilon_m \quad (1)$$

where m denotes the FOMC meeting, $f f b_m$ is the target FFR going into the FOMC meeting, $F_m \Delta y_{m,i}$ is the Greenbook forecast from meeting m of real output growth in quarters around meeting m (-1 is previous quarter, 0 is current quarter, etc.), $F_m \pi_{m,i}$ are Greenbook forecasts of GDP deflator inflation, and $F_m u e_0$ are Greenbook forecasts of the current quarter's average unemployment rate. The estimated residuals $\hat{\varepsilon}_m$ are then defined by RR as MP shocks.

We extend the RR dataset on MP shocks until December 2008 as follows. First, we incorporate more recent changes in the target FFR decided upon at regular FOMC meetings. Second, we extend the Greenbook forecasts until December 2008, which is when the zero-bound on interest rates became binding. Estimating the exact same specification as RR upon this extended dataset since January 1969 yields a sequence of MP shocks at the frequency of FOMC meetings. We then construct a quarterly

⁸ Consistent with this, Parker and Vissing-Jorgensen (2009) document that consumption of high-income households moves disproportionately with aggregate consumption.

measure of MP shocks by summing the orthogonalized innovations to the FFR from each meeting within a quarter. Consistent with the results documented in RR, the shocks are particularly large and volatile in the early 1980s during the Volcker disinflation (Appendix Figure 1). The shocks also identify periods in which policy was more contractionary than usual conditional on real-time forecasts. For example, the “pre-emptive strike” against inflation in 1994-1995 is visible as a period of consistently positive MP shocks, as is the 2005-2006 period. The 2000-2004 period, on the other hand, is identified as more expansionary than would have been typical given staff forecasts of macroeconomic conditions, consistent with Taylor (2007).

Before turning to the effects of MP shocks on inequality, we first investigate how contractionary monetary policy actions affect macroeconomic aggregates, financial variables, as well as more detailed income and consumption aggregates. We follow Jorda (2005) and estimate the response of economic variables to monetary policy shocks at different horizons h using local projection methods

$$x_{t+h} - x_{t+h-1} = c^{(h)} + \sum_{j=1}^J \alpha_j^{(h)} (x_{t-j} - x_{t-j-1}) + \sum_{i=1}^I \beta_i^{(h)} e_{t-i}^{RR} + error_{t+h}, \quad h = 0, \dots, H \quad (2)$$

where x is the variable of interest and the e_t^{RR} are quarterly monetary policy innovations. With the exception of interest rates, we use first-differences of macroeconomic variables in estimating (2) and generate accumulated impulse responses to MP shocks from the estimated $\{\hat{\beta}_1^{(h)}\}_{h=0}^H$.⁹ As a benchmark, we set $J=2$ and $I=20$. We estimate the system of equations across horizons jointly. Standard errors are as in Driscoll-Kraay (1998) to allow for arbitrary serial and cross-sectional across horizons and time. For each impulse response, we present one and 1.65 standard deviation confidence intervals, as well as p-values for tests of the null hypothesis that the impulse response is equal to zero for all horizons $h = 0, \dots, H$. We consistently use $H=20$ quarters.

The results are presented in Figure 2 using data from 1969:Q3 to 2008Q4, the entire period over which MP shocks are available. For comparability across specifications, we define the time sample based on the time series of the dependent variable for horizon $h=0$. Over the entire sample, contractionary monetary policy shocks lower real GDP and consumption but raise unemployment.¹⁰ The reduction in

⁹ It is conventional to assume that monetary policy shocks do not have contemporaneous effects on output, inflation, etc. but may have contemporaneous effect on interest rates, etc. Consistent with this convention, we set the contemporaneous effect for all variables (except the fed funds rate) to zero in the impulse responses reported in Figure 2. That is, we use $\{\hat{\beta}_1^{(h)}\}$ rather than $\{\hat{\beta}_0^{(h)}\}$ for all variables but fed funds rate. For fed funds rate, we use $\{\hat{\beta}_0^{(h)}\}$.

¹⁰ The reason why it is important to report p-values for the null hypothesis of zero change over the entire IRF horizon is illustrated in the response of real GDP to a monetary policy shock. If one focuses on pointwise responses, none are individually significant at the 10% level, so one might be tempted to conclude that monetary policy does not have real effects. But the null hypothesis of monetary neutrality, when correctly tested as the proposition that the response of GDP is zero at all horizons, is decisively rejected at the less than 0.1% level. Since our interest is in whether monetary policy has any redistributive effects, we will similarly focus on p-values testing the null of no response over the entire IRF.

consumption obtains for both durables as well as non-durables and services.¹¹ These results conform to the empirical literature on the effects of MP shocks (see Christiano et al. 1999 for a review).

In addition, we consider the effects of MP shocks on real housing prices (Case-Shiller price index deflated by the GDP deflator), which are a particularly important component of household wealth. Real housing prices, the major financial asset for many households, decline gradually after one to two years, ultimately falling by 5% after a one hundred basis point shock to the FFR. This suggests one channel through which monetary policy might affect households differently: to the extent that households' wealth is not allocated in the same manner across assets, then those households whose wealth is particularly concentrated in their home would tend to experience very different wealth effects than non-homeowners. Wong (2015) presents additional evidence in line with this channel.

Figure 2 also presents responses of different sources of income to contractionary MP shocks. The response of real wages is not statistically different from zero over either sample, while business income drops rapidly and significantly. Financial income, on the other hand, rises significantly. Total income from transfers drops over the first year after a shock before returning to its original level. Thus, these results suggest that heterogeneity in income sources across households may also lead to important distributional consequences to monetary policy actions.¹² Contractionary monetary policy will tend to raise incomes for those who receive a lot of financial income but lower incomes for business owners.

3.2 The Effects of Monetary Policy Shocks on Inequality

To quantify the overall effects of MP shocks on economic inequality, we estimate a version of equation (2) using inequality measures for total income, labor earnings, total expenditure and consumption, defined as in section 2:¹³

$$x_{t+h} - x_{t+h-1} = c^{(h)} + \sum_{j=1}^J \alpha_j^{(h)} (x_{t-j} - x_{t-j-1}) + \sum_{i=0}^I \beta_i^{(h)} e_{t-i}^{RR} + error_{t+h}, \quad h = 0, \dots, H. \quad (2')$$

Note that we allow a contemporaneous response of inequality to monetary policy shocks because of time aggregation in the CEX data (we discuss this more below and in Appendix A) and thus the impulse response is given by $\{\hat{\beta}_0^{(h)}\}_{h=0}^H$.

¹¹ NIPA's definitions of spending are different from our definitions of consumption/spending in the CEX. NIPA's non-durable consumption is the closest counterpart of our definition of consumption in the CEX. Appendix Table 13 documents that the response of non-durable consumption is similar to the response of CEX-based measure of consumption. Thus, although there is a discrepancy in the aggregate levels of CEX and NIPA spending, the impulse responses to monetary policy shocks are not necessarily different.

¹² In Appendix Figure 2, we show that these differential responses of incomes also hold in the post-1980 period.

¹³ To ensure that changes in inequality are not driven by changes in the composition of CEX households over time, we hold the set of households constant when we calculate changes in measures of consumption and expenditure inequality from a given quarter to the next one.

We do so for each form of inequality using three different measures of inequality for each: the cross-sectional standard deviation (of logged values), the Gini coefficient, and the difference between the (log) 90th percentile and the (log) 10th percentile. While MP shocks are generated regressors, Pagan (1984) shows that if the null hypothesis is $\beta_0^{(h)} = 0$ for any $h = 0, \dots, H$, then standard errors need no adjustment. Given the consensus view among mainstream economists that monetary policy has played little role in affecting economic inequality in the U.S., this is a reasonable null to hold. Furthermore, as discussed in Coibion and Gorodnichenko (2012a), explicitly adjusting standard errors for the presence of generated regressors has negligible effects in this setting because the shocks are the residuals from the first stage rather than the fitted values. Intuitively, because MP shocks are the residuals from estimates of equation (1), they will be largely orthogonal to contemporaneous economic conditions and other factors absorbed into the error term in equation (2), further justifying the use of unadjusted standard errors. In estimating equation (2) for inequality measures, we consistently use a lag structure of $J = 2$ and $I = 20$ quarters, but show later that our results are insensitive to alternative lag structures.

Figure 3 presents the accumulated impulse responses from estimates of equation (2) for each form of inequality (income, labor earnings, expenditure and consumption) and measure of that inequality (standard deviation, Gini, and 90th to 10th percentile differential) using data from 1980Q3 until 2008Q4 and the associated one and 1.65 standard deviation confidence intervals. For each response, we again report p -values for the test of the null hypothesis that monetary policy shocks have no effect on each form of inequality across all ($h = 0, \dots, 20$) horizons. In all cases, we can reject the null hypothesis of no response of inequality to the monetary policy shock at the 5% level and can do so at the 1% level for all but the earnings 90th-10th percentile difference. Hence, from a statistical point of view, the results unambiguously point toward monetary policy having redistributive effects.

For total income inequality, we observe a delayed rise in inequality after monetary policy shocks, with most of the increase occurring one to two years after the shock depending on the specific measure.¹⁴ With earnings inequality, the responses are less precisely estimated. Although we can still reject the null of no response over the entire horizon at standard levels of significance, it is difficult to identify a clear pattern of response of earnings to monetary policy shocks.

While we can unambiguously reject the null of zero response of income inequality to monetary policy, the large standard errors make it difficult to assess the economic significance of the results. The persistence of the impulse responses is certainly consistent with other evidence for the economic effects of monetary shocks. For example, Romer and Romer (2004) find that the maximum effect of monetary

¹⁴ We obtain nearly identical results if we use after-tax income inequality (Appendix Figure 3).

shocks on GDP occurs two years after a shock and the effect remains significant after then for quite some time. Coibion and Gorodnichenko (2012b) and others document that monetary policy is extremely persistent so that a monetary shock is propagated for a long time. To assess the magnitudes involved, we focus on the Volcker disinflation when the experiment is perhaps as clear cut as one can get. The cumulative Romer-Romer shock over 1980-1984 is approximately 1.5 percentage points. The Congress Budget Office (2011, Figure 11) estimates that the Gini coefficient for market income plus transfers increased by approximately 3 percentage points. Our estimates in Figure 3 suggest that given the cumulative size of the shock (1.5 percentage points), Gini inequality should have increased by approximately 1.5 percentage points for income. Theoretical models are also consistent with these magnitudes. For example, the heterogeneous agent model of Gornemann et al. (2014) implies that a one hundred basis point increase in the federal funds rate should raise the income Gini by approximately 0.003 percentage points, or around one-third of what we find, whereas the calibrated model of Lueticke (2015) predicts a larger response of the income Gini of over 0.02 percentage points, or twice what we find. Our point estimates are therefore in line with both historical and theoretical magnitudes, although it must be emphasized that these estimates come with a lot of uncertainty.

Turning to consumption and expenditure inequality, every measure of inequality points to a statistically significant and highly persistent increase in inequality after a contractionary monetary policy shock. Furthermore, the point estimates for expenditures are consistently larger than for other forms of inequality, pointing to MP shocks having disproportionately large effects on expenditure inequality relative to other forms of economic inequality. With the volatility of consumption and expenditure inequality being significantly lower than that of income inequality (Appendix Table 1), this translates into larger economic effects: a one hundred basis point monetary policy shock raises inequality in expenditures and consumption by approximately three standard deviations each.¹⁵ In short, across all forms of inequality (with only earnings inequality being a possible exception) and the different ways of measuring

¹⁵ The fact that the estimated response of income/earnings inequality is weaker than the estimated response of consumption/expenditures need not indicate an inconsistency. First, income measures reported in CEX do not include changes in valuation of assets. In other words, if valuation gains are not realized, they are not recorded in CEX. Obviously, households can consume more in response to capital gains and thus consumption/expenditure responses can be stronger. Second, consumption can be more volatile/disperse than current income because consumption can respond to news about future income. For example, if the income process has positive correlation of growth rates (e.g. an ARI(1,1) process), consumption will be more volatile than income because households want to start to consume against their future income that is greater than the current income. Third, CEX survey questions about income refer to the previous twelve months while consumption questions refer to more recent periods (the last three months or more recent). Thus, a weak response in measures of income inequality may be a result of this CEX limitation.

each type of inequality, *the impulse responses indicate that contractionary MP shocks are associated with higher levels of economic inequality*, although the exact magnitudes remain imprecise.¹⁶

3.3 Robustness

We consider a number of robustness checks on this benchmark result. First, we assess the sensitivity of our findings to lag lengths in specification (2). Using fewer lags of monetary policy shocks has little qualitative effect on the result, as illustrated in Appendix Figure 4 for the case of $I=12$. We also consider using more lags of the dependent variable, setting $J=4$, which requires us to drop two quarters in 1980. While this has little effect on the responses of income, expenditure and consumption inequality, both the Gini and the 90-10 measures of earnings inequality now point toward a brief decline in earnings inequality after contractionary monetary policy shocks (Appendix Figure 5). To identify whether this reflects the addition of lags or the reduction in the time sample, we re-estimate our baseline specification of (2) omitting the entire Volcker disinflation period (i.e. starting in 1985Q1). Results for income, expenditure and consumption inequality are again largely unaffected, but earnings inequality now briefly declines when measured using all three inequality measures (Appendix Figure 6). This suggests that the rise in earnings inequality identified in the benchmark results could be particularly sensitive to the Volcker disinflation period, a feature which is not the case for the other inequality measures. In contrast, if we drop all recession periods from the analysis, we find that the rise in earnings inequality is much more pronounced than in the baseline case (Appendix Figure 7) while the results for other forms of inequality are again qualitatively unchanged. Hence, while the rise in income, expenditure and consumption inequality after contractionary monetary policy shocks appears to be robust, there is more sensitivity in the response of earnings inequality to the specific time period included in the analysis.

As a second set of checks, we investigate whether our benchmark results are sensitive to timing assumptions. Specifically, the survey questions in the CEX ask respondents to report their spending for certain types of goods over the previous three months (other types of spending are reported at the monthly frequency). The resulting 3-month spending for these types is allocated into monthly spending by imputing a third of the 3-month consumption to each month that falls into the given 3-month period. Because a third of participating households is surveyed in a given month, the total level of spending in a given calendar quarter includes consumption that may occur in other calendar quarters. As a result, time aggregation of these cohorts to the quarterly frequency can lead to a temporal structure which does not conform to that

¹⁶ We find similar results (Appendix Table 12) when we use monetary policy shocks identified from changes in fed funds futures around FOMC announcements (see Gorodnichenko and Weber (2016) for more details on the construction of these shocks).

used for monetary policy shocks. As shown in Appendix A, this implies that our local projection approach will recover a smoothed average of the underlying impulse response functions.

An alternative approach is to construct a different quarterly sequence of monetary policy shocks to conform to the timing of each consumption within each cohort (A , B , and C), construct inequality measures within each cohort, and then estimate the response of inequality as a system of equations across cohorts and horizons:

$$\begin{aligned}\Delta\sigma_{t+h}(C^{(A)}) &= \gamma^{h,A} + \sum_{k=1}^K \alpha_k^{(h)} \Delta\sigma_{t-k}(C^{(A)}) + \sum_{s=0}^S \beta_s^{(h)} e_{t-s,RR}^{(A)} + error_{t,h}^{(A)}, \\ \Delta\sigma_{t+h}(C^{(B)}) &= \gamma^{h,B} + \sum_{k=1}^K \alpha_k^{(h)} \Delta\sigma_{t-k}(C^{(B)}) + \sum_{s=0}^S \beta_s^{(h)} e_{t-s,RR}^{(B)} + error_{t,h}^{(B)}, \\ \Delta\sigma_{t+h}(C^{(C)}) &= \gamma^{h,C} + \sum_{k=1}^K \alpha_k^{(h)} \Delta\sigma_{t-k}(C^{(C)}) + \sum_{s=0}^S \beta_s^{(h)} e_{t-s,RR}^{(C)} + error_{t,h}^{(C)},\end{aligned}$$

for $h = 0, \dots, H$, where we restrict the impulse responses to be the same across cohorts. We allow for fixed effects which vary by cohort and horizon (γ). This alternative approach, described in more detail in Appendix A, ensures that the timing of monetary policy shocks conforms to the timing of consumption within each cohort. However, because the cross-section of each cohort is much smaller, each inequality measure is now much noisier than our benchmark measures. As illustrated in Appendix Figure 8, this alternative timing significantly reduces the precision of the estimates (as expected from noisier measures of inequality) and leads to more transitory increases in consumption inequality, but does not otherwise alter the qualitative result that contractionary monetary policy shocks raise consumption and expenditure inequality.

Finally, we want to ensure that our results are robust to household characteristics. Our baseline measures of economic inequality across households do not control for a number of household characteristics such as number of people in the household, age of household members, education, etc. Because work on inequality sometimes normalizes household income and consumption by the number of individuals in the household, we also consider measures of income and consumption inequality across households adjusted using an OECD equivalence scale.¹⁷ The results (using the cross-sectional standard deviations) are very similar to those in our baseline (Appendix Figure 9), with only the response of consumption inequality being significantly smaller and more transitory than in the baseline.

¹⁷ The OECD equivalence scale assigns a value of 1.0 to the head of the household, a value of 0.7 to each additional adult (17+), and a value of 0.5 to each child.

We also consider measures of inequality after controlling for factors which would contribute to differential income and consumption levels across households. For example, we control for age of the head of household (quartic polynomial), the number of adults and the number of children in the household, race, the education level of the head of household, and a number of other characteristics by first regressing logged household income, earnings, consumption and expenditures on these observables. Inequality is the cross-sectional standard deviation of the residuals across households (since Gini coefficients cannot be constructed using residuals). Again, the estimates are qualitatively unchanged with only the response of consumption inequality being significantly smaller (but still significantly positive).

In short, contractionary monetary policy shocks have a discernable effect on economic inequality: they are followed by prolonged rise in income, consumption and expenditure inequality and, to a lesser extent, a rise in labor earnings inequality.

3.4 How Important Is The Contribution of Monetary Policy Shocks to Inequality?

In this section, we consider the extent to which MP shocks can account for the dynamics of income and consumption inequality in the U.S. That is, whereas the previous section focused on characterizing whether MP shocks affect inequality, we now turn to the question of assessing the quantitative contribution of this relationship.

First, we consider the share of the variance in inequality which can be accounted for by MP shocks over this time period. The fraction of the variance in inequality at different horizons accounted for by MP shocks can be recovered directly from estimates of equation (2). This measure therefore provides one metric of the extent to which MP shocks are quantitatively important in driving inequality dynamics. Estimates from the variance decompositions are presented in Figure 4 for total income, labor earnings, total expenditures, and consumption inequality. In line with the impulse responses, we find that the quantitative contribution of monetary policy shocks to earnings inequality has been small, less than 5% at all horizons of 5 years or less. But for other variables, monetary policy shocks have been relatively more important. With income and consumption inequality, monetary policy shocks account for 10-20% of forecast error variance at longer run horizons, and an even larger share for expenditure inequality. These magnitudes are in line with the contribution of monetary policy shocks to other macroeconomic variables (Christiano et al. 1999) and are consistent with these shocks playing a non-trivial role in accounting for cyclical U.S. inequality dynamics.

As a second way to assess whether the impulse responses of inequality are quantitatively important, we consider the extent to which MP shocks since 1980 can account for the historical variation in U.S. income and consumption inequality. Predicted changes in income, labor earnings,

expenditure and consumption inequality due to MP shocks come from our estimates of equation (2). We average both actual and predicted variables over the previous and subsequent quarter values in the figures to downplay very high-frequency variation in inequality measures.

Figure 5 presents the results using the cross-sectional standard deviation measures of inequality, with other measures yielding qualitatively similar results. First, monetary policy shocks appear to account for very little of the variation in earnings inequality, consistent with the results of the forecast error variance decomposition, except during the very early 1980s. This likely explains the sensitivity of the impulse responses of earnings inequality to the inclusion of the Volcker disinflation discussed in section 3.3. We similarly find little contribution of monetary policy shocks to consumption inequality dynamics after the early 1980s. In contrast, there is a higher correlation visible between the predicted movements in income and expenditure inequality from monetary policy shocks and the actual changes in these variables throughout the sample. While monetary policy shocks clearly cannot account for the trends in these variables, these results suggest that monetary policy changes have played some role in accounting for higher frequency movements in economic inequality in the U.S.

IV Channels of Redistribution

There are multiple channels through which monetary policy can lead to redistribution of income and spending. One such channel is the *income composition channel*, i.e. the fact that there is heterogeneity across households in terms of their primary sources of income. While most households rely primarily on labor earnings, others receive larger shares of their income from business, financial or transfer income. To the extent that monetary policy affects these different forms of income in a heterogeneous manner (and it does), then different types of households will experience different income outcomes. For example, richer households tend to receive relatively more business income, and since the latter tends to rise relative to wages after expansionary monetary shocks, this effect would tend to increase income and consumption inequality. A second channel is the *financial segmentation channel*: if some agents frequently trade in financial markets and are affected by changes in monetary policy prior to other agents, then an expansionary monetary policy shock will tend to redistribute wealth toward those agents most connected to financial markets, as in Williamson (2009) and Ledoit (2009). As agents participating actively in financial trades have higher income and consumption on average than unconnected agents, then this channel implies that consumption inequality should rise after expansionary monetary policy shocks. An additional channel pushing in the same direction is the *portfolio channel*. If low-income households tend to hold relatively more currency than high-income households (Erosa and Ventura 2002, Albanesi 2007), then inflationary actions on the part of the central bank would represent a transfer from

low-income households toward high-income households which would tend to increase consumption inequality.

Two other channels, however, will tend to move inequality in the opposite direction in response to expansionary monetary policy actions. The first is the *savings redistribution channel*: an unexpected increase in interest rates or decrease in inflation will benefit savers and hurt borrowers as in Doepke and Schneider (2006), thereby generating an increase in consumption inequality (to the extent that savers are generally wealthier than borrowers). The second is the *earnings heterogeneity channel*. Labor earnings are the primary source of income for most households and these earnings may respond differently for high-income and low-income households to monetary policy shocks. This could occur, for example, if unemployment disproportionately falls upon low income groups, as documented in Carpenter and Rogers (2004). Similar effects could arise among the employed due to different wage rigidities across the income distribution (e.g. from unionization in production but not management), varying degrees of complementarity/substitutability with physical capital depending on agents' skill sets, or different endogenous labor supply responses from household-specific characteristics which differ across the distribution. Heathcote et al. (2010), for example, document that the labor earnings at the bottom of the distribution are most affected by business cycle fluctuations. The income composition channel could also push toward reduced—rather than increased—inequality after expansionary monetary policy since low-income households receive, on average, a larger share of their income from transfers (e.g. unemployment benefits, food stamps) and transfers tend to be countercyclical.

4.1 Earnings and Income Heterogeneity

The evidence in section 3.2 suggests that contractionary monetary policy actions raise consumption and income inequality. We now investigate some of the mechanisms underlying this inequality response. Specifically, we focus on the extent to which MP shocks affect consumption and income in the upper and bottom ends of the distribution. To do so, we consider the responses of different percentiles of the consumption and income distributions to MP shocks. Because of the nature of the survey data, the way these measures are constructed for income measures versus consumption measures are different. In the case of both income and labor earnings, we construct percentiles each quarter from the distribution of households reporting income and earnings that quarter. Since households are asked about their income and earnings over the last twelve months in only the first and fourth quarter in which they participate in the survey, these measures of different percentiles of the earnings and income distribution reflect a changing composition of households each quarter. In contrast, because consumption and expenditures are tracked each quarter, we can control for the potentially changing composition and ranking of

households across periods when we measure the changes in consumption and expenditures by percentile each quarter. Specifically, in each quarter, we rank households according to either their consumption or expenditures. Then, we isolate those households near each percentile of interest (90th, 50th, and 10th) that quarter and construct the percent changes in their consumption and expenditures. Applying this procedure each quarter yields a time series of changes for each percentile controlling for composition effects. We then look at how the difference between the 90th and 50th percentile of each distribution responds to monetary policy shocks using equation (2) and do the same for the difference between the 10th and 50th percentile of each distribution. We estimate the two sets of impulse responses jointly for each form of inequality (income, earnings, expenditure and consumption) and test the null hypothesis that the two are equal across all horizons ($h=0, \dots, 20$).

Consistent with the absence of a strong response of earnings inequality as measured by the difference between the 90th and 10th percentiles of the earnings distribution in Figure 3, we find (Figure 6) only limited evidence of heterogeneity in labor earnings across the distribution after monetary policy shocks. The difference between the 90th and 50th percentiles remains relatively close to zero. Although we can reject the null that earnings responses of the 90th and 50th percentiles are equal, the earnings of the 90th percentile rise only 1-2% relative to the median. The dynamics of the difference between the 10th and the 50th percentiles are similar, and we cannot reject the null that the two impulse responses are the same over the entire horizon. Thus, a contractionary monetary policy shock is characterized by a widening of the earnings distribution above the median but a tightening of the earnings distribution below the median, leading to only small effects (if any) on inequality as measured by the difference between the 90th and the 10th percentiles.

In contrast, we find more heterogeneity in total income responses. Incomes of those at the 90th percentile rise persistently relative to the median household while those at the 10th percentile see their income decline relative to the median, especially at longer horizons. The behavior of total income of 90th percentile relative to the median follows fairly closely the pattern of labor earning differences, but this is not the case for total incomes of the 10th percentile relative to the median. Appendix Table 2 presents a decomposition of total income for each quintile (measured by consumption of nondurables and services as a proxy for permanent income). This decomposition illustrates the greater importance of labor earnings as a share of total income at higher quintiles. In the 1990s, labor income accounted for nearly 80% of total income for the highest quintile, but less than 40% for the bottom quintile. Instead, the largest contributor to total income (approximately 50%) for those in the bottom quintile of the distribution is the “other income” category, which includes unemployment insurance, Social Security and pension payments, welfare, worker’s compensation, and other transfer programs. Even at the second quintile of

the distribution, other income accounts for approximately 25% of total income, whereas this ratio is less than 10% for the top 2 quintiles. Financial and business income shares vary much less across the distribution: the share of business income rises from 2% of total income for the bottom quintile to 5-9% for the top quintile while financial income falls from a share of 11% at the bottom quintile to approximately 8% for the top quintile. Because transfers fall relative to wages after contractionary monetary shocks (by two percentage points when estimated over the whole sample and by four percentage points over the post-1980 period), much of the relative decline in the total income of lower income groups can be accounted for by their different composition of income.

With consumption and expenditures, we observe even more heterogeneity. Consumption and expenditures of the 10th percentile decline relative to the median (we can reject the null that the response is equal to zero at standard levels for each variable) by similar orders of magnitude as the relative decline in their income. However, the consumption and expenditures of the 90th percentile rise disproportionately relative to the median: by 10% for consumption and 15% for expenditures while their relative incomes rise only by 2-3%. The increase in consumption and expenditure inequality observed in Figure 3 after contractionary monetary policy shocks is therefore primarily driven by rising expenditures and consumption of those at the top of the distribution, and only to a smaller extent falling consumption and expenditures by those at the lower end of the distribution. One reason for these patterns could be that different groups consume very different bundles of goods, especially if those at the top of the distribution have more expenditures tied to interest rates. Appendix Table 3 provides a decomposition of consumption and expenditures by households across quintiles, ranked by consumption of non-durables and services each quarter, as well as information about their relative expenditures on interest-sensitive expenditures.¹⁸ While households in the upper end of the distribution consume relatively more durables and devote more of their spending to interest-sensitive expenditures like mortgage payments and auto purchases, the differences across quintiles are small. Hence, the greater response of expenditures for those at the 90th percentile of the expenditure distribution after MP shocks is unlikely to be explained via composition of spending across quintiles.

4.2 Distributional Mobility after Monetary Policy Shocks

A potential caveat to the responses of specific percentiles of income and consumption distributions to MP shocks is that it is not clear to what extent households are moving across the distribution. To assess mobility across the distribution, we construct time-varying quarterly transition probabilities for each

¹⁸ Interest-sensitive expenditures are defined as mortgage payments, purchases of automobiles, spending on education, spending on repairing houses and other real estate, and durable consumption goods.

quintile of the consumption distribution. These are defined as the fraction of consumers within each quintile who, in the next quarter, end up in another quintile. Figure 7 plots the time-varying transition frequencies of households staying within the same quintile of the consumption distribution from 1980Q1 until 2008Q4. One notable feature of these time series is that mobility has generally declined over time for each quintile. For example, for the middle quintile, the frequency of remaining within that quintile from one quarter to the next has gone from approximately 35% in 1980 to nearly 45% in 2008.

To assess whether MP shocks have significant effects on these transition frequencies, we estimate equation (2) for each series measuring the probability of staying in the same quintile from one quarter to another with squared monetary policy innovations as the shocks. The latter identify whether MP shocks, be they positive or negative, lead to increased movements across the distribution. Impulse responses, presented in Figure 7, point to little persistence in the effects of MP shocks on transition probabilities: after two years, almost none of the estimates are different from zero. At the same time, MP shocks cause increased movement within the distribution: the frequency of households remaining within the same quintile declines for all quintiles. These results suggest one reason why impulse responses for different percentiles of the total income and labor earnings distribution appear so volatile over the first two years: there is significant movement within the distribution in the quarters following MP shocks. However, as this increased mobility fades after two years, the percentile responses converge to more stable outcomes. Consistent with this, percentile responses of the expenditure and consumption distributions, which control for composition, are more stable over the first two years than are those of the earnings and income distributions.

4.3 Wealth Redistribution

While the previous section documented heterogeneity in labor income responses to MP shocks, as well as heterogeneity in sources of income across individuals, discussion of the distributional effects of monetary policy actions frequently focuses on three additional channels. First, if households hold different portfolios and some financial assets are more protected against inflation surprises than others, then monetary policy actions can, via their effects on inflation, cause a reallocation of wealth across agents, as emphasized in Erosa and Ventura (2002) and Albanesi (2007). A second redistributive channel stems from segmented financial markets: if some agents frequently trade in financial markets and are affected by changes in monetary policy prior to other agents who are less involved in financial markets as in Williamson (2009), then contractionary MP shocks should redistribute wealth from those connected to the markets toward the unconnected agents leading to declining consumption inequality. Unfortunately, the CEX does not include reliable data on the cash holdings of households nor does it

include information that would allow us to identify which households are most connected to financial markets, such as those working for the financial industry. However, to the extent that both channels point toward contractionary MP shocks lowering consumption inequality, the fact that our baseline results go precisely in the opposite direction suggests that these channels, if present, must be significantly weaker than the labor earnings channel.

In addition, because monetary policy actions alter real interest rates in the short run, they will have redistributive effects on savers and borrowers as in Doepke and Schneider (2006): since contractionary policy shocks represent a transfer from borrowers (low net-worth) to savers (high net-worth), one might expect to see disproportionate increases in the expenditures of borrowers. While the CEX does not include reliable data on the net wealth position of households, we can still assess this channel by restricting our attention to households with those characteristics identified by Doepke and Schneider (2006) as being closely associated with high net-worth and low net-worth households. Specifically, they argue that the main losers from inflation are “rich, old households” while the main winners are “young, middle-class households with fixed-rate mortgage debt.” In the context of the CEX, we therefore restrict the sample to two groups: 1) low net-worth households are defined as aged 30-40 year-old white households with a male head in the household, no financial income, and positive mortgage payments, 2) high net-worth households are defined as aged 55-65 years white households with a male head in the household, positive financial income, and no mortgage payments. We restrict the first two categories to be white households with a male head in the household to limit the possible sources of differences between the two categories without unduly restricting the number of households in each group (as would be the case if we imposed restrictions on education levels).

For each set of households, we then construct measures of mean (log) income and expenditures as well as subcategories of each. We then take the difference between the two groups and construct impulse responses for the difference in levels using equation (2). The results, plotted in Figure 8, support the redistribution of nominal wealth effect in generating heterogeneity in consumption. Labor earnings of high net-worth households are, if anything, lower than those of low net-worth households after monetary shocks but their incomes are modestly higher, approximately 0.5% on average. While their relative expenditures rise by a proportional amount, their consumption is much higher: rising as much as 5% relative to low net-worth households. This disproportionate response of consumption, relative to income, is consistent with a redistributive effect of monetary policy.

V Permanent Changes in Monetary Policy

In assessing the effects of MP shocks on inequality, we have followed the approach of Romer and Romer (2004) because their identification procedure has a number of advantages over previous attempts to do so. However, as emphasized by RR, their procedure is not designed to characterize the reaction function of the Fed and therefore the identified innovations reflect a number of potential sources: changing operating procedures, policymakers' evolving beliefs about the workings of the economy, variation in the Fed's objectives, political pressures, and responses to other factors. Some of these changes could be interpreted as innovations to the central bank's policy rule (i.e. its systematic behavior)—for example if a new Chairman dislikes inflation more than a previous one—while others would more appropriately be characterized as transitory deviations from a policy rule (for example, political pressures at the time of an election). RR deliberately do not attempt to separate out these different sources to maintain as much variation in the shocks, but a caveat to this is that different sources of shocks may yield very different economic responses. In particular, one might expect permanent changes in monetary policy to have more pronounced effects than transitory changes. If different forms of MP actions affect inequality differently, then using a composite shock measure such as that of RR may contribute to the imprecision in measuring the effects of monetary policy on inequality.

As a result, we want to assess whether similar qualitative results obtain using a narrower but more persistent type of monetary policy action: changes in the Federal Reserve's target rate of inflation. Because of the inability to directly observe the historical inflation target of the Federal Reserve, we consider two different estimates of this measure. First, following Coibion and Gorodnichenko (2011), we posit a reaction function for the central bank:

$$i_t = (1 - \rho_{1,t} - \rho_{2,t})[F_t r r_t^n + \varphi_{\pi,t}(F_t \pi_{t+1} - \bar{\pi}_t) + \varphi_{gy,t}(F_t g y_t - \bar{g} \bar{y}) + \varphi_{x,t} x_t] + \rho_{1,t} i_{t-1} + \rho_{2,t} i_{t-2} + v_t \quad (5)$$

according to which the central bank moves interest rates with its perception of the natural rate of interest $F_t r r_t^n$, and also responds to deviations of expected inflation $F_t \pi_{t+1}$ from its potentially time-varying target $\bar{\pi}_t$, deviations of expected output growth from its target $(F_t g y_t - \bar{g} \bar{y})$, and the output gap (x_t) . In addition to allowing for time variation in the intercept, we allow for variation in the target level of inflation, in the response coefficients to macroeconomic conditions, and in the degree of interest-smoothing, which is an important element of the Fed's reaction function (Coibion and Gorodnichenko 2012b). Each time-varying coefficient is assumed to follow a random walk process as in Boivin (2006). We estimate the coefficients of this reaction function as in Kozicki and Tinsley (2009) and Coibion and Gorodnichenko (2011, CG henceforth) using data from 1969 to 2008 at the FOMC meeting frequency using real-time forecasts of inflation, output growth and the output gap.

For robustness, we also consider an additional measure, the inflation target estimated by Ireland (2006). Ireland uses an otherwise standard small-scale New Keynesian model with a Taylor (1993) rule in which the target rate of inflation rate varies over time. He then estimates the parameters of the model by maximum-likelihood methods using data on output, prices, and interest rates from which he recovers the implied time path of the Fed's target rate of inflation. Thus, whereas our first measure of target inflation comes from single-equation of a Taylor rule with time-varying coefficients on real-time Greenbook forecasts, Ireland's approach is the polar opposite: estimation of the entire structural model using final data for macroeconomic aggregates and no real-time forecasts.

Both approaches point toward rising inflation targets over the 1970s, peaking at approximately 8% (Appendix Figure 10). The two measures also pick up rapid declines in target inflation in the early 1980s, corresponding to the Volcker disinflation, and a prolonged subsequent decline in the target inflation rate over the course of the 1990s and 2000s, with the target rate of inflation reaching 2% in 2005 in both cases. At the same time, a number of qualitative differences are present: Ireland's measure points to a rapid increase in the inflation target starting around 1973, reaching 8% in late 1974 before declining to 6% in 1975. In contrast, the CG measure points to only a gradual increase in the inflation target during this time period. Second, while both measures reach maximum values of 8% prior to the Volcker disinflation, the Ireland measure begins to decline in 1981 while the CG measure continues to rise until the end of 1982, at which point it drops much more abruptly: 3% points over the course of just a few months.

To assess the effects of changes in target inflation rates on inequality, we estimate inequality responses using equation (2) for either measure of shocks to the inflation target rather than RR shocks. We present the results for cross-sectional standard deviations, for a 1% point *decrease* in the inflation target in Figure 9 using the CG measure of target inflation. Using the Ireland (2006) measure yields very similar results (Appendix Figure 11). First, a decrease in the Fed's inflation target leads to a rise in both earnings and income inequality: we can reject the null of zero response for both at the 1% level. Second, both consumption and expenditure inequality also rise persistently. Third, shocks to the inflation target generally account for a smaller fraction of the forecast error variance than broader definitions of monetary policy shocks, as one might expect. They are consistently below ten percent. However, in terms of their historical contribution to the dynamics of inequality, both measures of shocks imply that changes in the Fed's inflation target during the early 1980s can account for much of the dynamics of inequality through much of the 1980s, albeit with very little contribution thereafter. This suggests that these very specific

forms of monetary policy innovations may have played a more important role in shaping economic inequality in the U.S. than has been previously recognized.¹⁹

VI Conclusion

Recent events have brought both monetary policy and economic inequality to the forefront of policy issues. We shed new light on the relationship between the two by assessing the effects of monetary policy shocks on consumption and income inequality in the U.S. Contractionary shocks appear to have significant persistent effects on inequality, leading to higher levels of income, labor earnings, consumption and total expenditures inequality across households. Furthermore, while monetary policy shocks cannot account for the trend increase in income inequality since the early 1980s, they appear to have nonetheless played a non-trivial role in cyclical fluctuations in some forms of inequality. Changes in the Federal Reserve's inflation target during the early 1980s appear to have played a particularly important role in accounting for changes in economic inequality over this early time period. To the extent that distributional considerations may have first-order welfare effects, our results support the continued development of models with heterogeneity across households which are suitable for monetary policy analysis. While heterogeneous agent models with incomplete insurance markets have become increasingly common in the literature, their implications for monetary policy remain understudied. In light of the evidence pointing to potentially non-trivial effects of monetary policy on economic inequality, this seems like an avenue worth developing further in future research.

Specifically, two channels appear to be particularly important for the distributional consequences of MP shocks. First, the differential composition of households' incomes appears to be particularly important in explaining the distributional consequences of monetary policy on total household income. In the case of low income households, transfer income is particularly important, so further study of these mechanisms seems warranted, as in McKay and Reis (2016). For very high income households (the top 1%), financial income plays a disproportionate role. Because data on these households is much more limited, characterizing their behavior is therefore likely to require models that endogenize both the wealth distribution and monetary policy, as in Luetticke (2015).

Second, the disproportionate increase in consumption and expenditures relative to income changes for those at the upper end of the distribution points to the possibility of significant wealth

¹⁹ We also assessed how shocks to the inflation target affect different parts of the distribution, as in section 3.5. As illustrated in Appendix Figure 12, decreases in the inflation target have much more pronounced effects on the bottom end of the distribution. We find that the differences between the 10th and 50th percentiles of earnings and income distributions worsen sharply, and those of consumption and expenditure distribution do so even more sharply, whereas the differences between the 90th and 50th percentiles for each of these distribution exhibit modest increases.

transfers via unexpected changes in interest rates and inflation. We find that the responses of consumption by high net-worth households are larger than that of low net-worth households in the data, consistent with Doepke and Schneider (2006). While data limitations make the identification of high and low net-worth households tentative, our results point to household balance sheets playing an important link in the monetary transmission mechanism. In contrast, while the CEX data do not allow us to directly quantify the portfolio and financial market segmentation redistribution channels, their predictions of consumption inequality falling after contractionary MP shocks suggests that these channels are quantitatively small relative to the others.

Finally, the sensitivity of inequality measures to monetary policy actions points to even larger costs of the zero-bound on interest rates than is commonly identified in representative agent models. Nominal interest rates hitting the zero-bound in times when the central bank's systematic response to economic conditions calls for negative rates is conceptually similar to the economy being subject to a prolonged period of contractionary monetary policy shocks. Given that such shocks appear to increase income and consumption inequality, our results suggest that standard representative agent models may understate the welfare costs of zero-bound episodes.

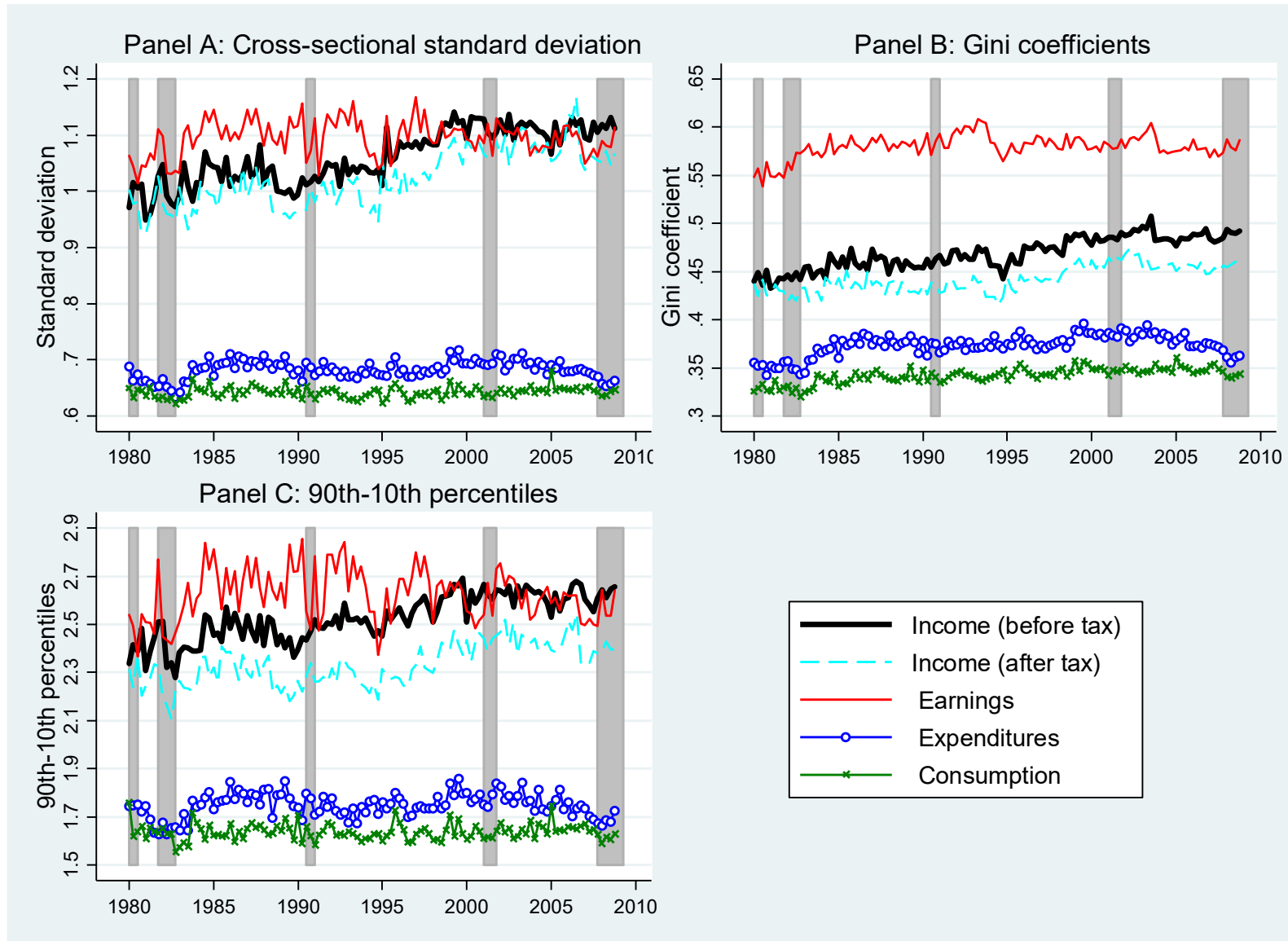
References

- Aguiar, Mark, and Mark Bilal, 2015. "Has Consumption Inequality Mirrored Income Inequality?" *American Economic Review* 105(9), 2725-56.
- Albanesi, Stefania, 2007. "Inflation and inequality," *Journal of Monetary Economics*, 54(4) 1088-1114.
- Attanasio, Orazio, 2003. "Consumption Inequality: What we know and what we can learn from it," Lecture to the Annual Meeting of the Society of Economic Dynamics, New York, June 2002.
- Attanasio, Orazio, Erich Battistin, and Hidehiko Ichimura Boivin 2004. "What really happened to consumption inequality in the US?" NBER Working Paper 10338.
- Attanasio, Orazio, Erik Hurst, and Luigi Pistaferri, 2012. "The Evolution of Income, Consumption and Leisure Inequality in the U.S., 1980-2010." NBER Working Paper 17982.
- Auclert, Adrien. 2016. "Monetary Policy and the Redistribution Channel." Manuscript. Available at http://www.princeton.edu/~aaucclert/mp_redistribution.pdf.
- Bee, Adam, Bruce Meyer, and James Sullivan, 2012. "The Validity of Consumption Data: Are the Consumer Expenditure Interview and Diary Surveys Informative?" NBER Working Paper 18308.
- Bernanke, Ben S., 2015. "Monetary Policy and Inequality." Ben Bernanke's Blog, June 1 2015.
- Boivin, Jean, 2006. "Has U.S. Monetary Policy Changed? Evidence from Drifting Coefficients and Real-Time Data," *Journal of Money, Credit and Banking* 38(5), 1149-1173.
- Bullard, James, 2014. "Income Inequality and Monetary Policy: A Framework with Answers to Three Questions," Speech at C. Peter McColough Series on International Economics, Council on Foreign Relations, June 26, 2014.
- Carpenter, Seth B., and William M. Rodgers III, 2004. "The Disparate Labor Market Impacts of Monetary Policy," *Journal of Policy Analysis and Management* 23(4), 813-830.
- Christiano, Lawrence, Martin Eichenbaum, and Charles Evans, 1999. "Monetary policy shocks: What have we learned and to what end?" *Handbook of Macroeconomics*, in: J. B. Taylor and M. Woodford (ed.), *Handbook of Macroeconomics*, volume 1, chapter 2, pages 65-148 Elsevier.

- Christiano, Lawrence, Martin Eichenbaum, and Charles Evans, 2005. "Nominal Rigidities and the Dynamic Effects of a Shock to Monetary Policy," *Journal of Political Economy* 113(1), 1-45.
- Clarida, Richard, Jordi Galí, and Mark Gertler, 2000. "Monetary Policy Rules and Macroeconomic Stability: Evidence and Some Theory," *Quarterly Journal of Economics* 115(1), 147-180.
- Cloyne, James, Clodomiro Ferreira, and Paolo Surico, 2016. "Monetary Policy When Households Have Debt: New Evidence on the Transmission Mechanism," Bank of England Working Paper 589. Available at <http://www.bankofengland.co.uk/research/Documents/workingpapers/2016/swp589.pdf>.
- Coibion, Olivier, and Yuriy Gorodnichenko. 2011. "Monetary Policy, Trend Inflation and the Great Moderation: An Alternative Interpretation," *American Economic Review* 101(1), 341-70.
- Coibion, Olivier, and Yuriy Gorodnichenko, 2012a. "What Can Survey Forecasts Tell Us about Information Rigidities?" *Journal of Political Economy* 120(1), 116-159.
- Coibion, Olivier, and Yuriy Gorodnichenko. 2012b. "Why are target interest rate changes so persistent?" *American Economic Journal: Macroeconomics* 4(4), 126-162.
- Coibion, Olivier, Yuriy Gorodnichenko, and Dmitri Koustas. 2017. "Consumption Inequality and the Frequency of Purchases," NBER Working Paper 23357.
- Congressional Budget Office, 2011. "Trends in the Distribution of Household Income Between 1979 and 2007." Available at <http://cbo.gov/sites/default/files/cbofiles/attachments/10-25-HouseholdIncome.pdf>
- Doepke, Matthias and Martin Schneider, 2006. "Inflation and the Redistribution of Nominal Wealth," *Journal of Political Economy* 114(6) 1069-1097.
- Driscoll, J. C., and A. C. Kraay, 1998. "Consistent Covariance Matrix Estimation With Spatially Dependent Panel Data," *Review of Economics and Statistics* 80(4), 549-560.
- Erosa, Andres and Gustavo Ventura, 2002. "On Inflation as a Regressive Consumption Tax," *Journal of Monetary Economics* 49(4) 761-795.
- Feenberg, Daniel and Elisabeth Coutts, 1993. "An introduction to the TAXSIM model," *Journal of Policy Analysis and Management* 12(1) 189-194.
- Fisher, Jonathan, David Johnson, and Timothy Smeeding, 2013. "Measuring the Trends in Inequality of Individuals and Families: Income and Consumption," *American Economic Review* 103(3), 184-88.
- Forbes, Kristin, 2015. "Low Interest Rates: King Midas' Golden Touch?" Speech at the Institute of Economic Affairs, February 24, 2015.
- Furceri, Davide, Prakash Loungani, and Aleksandra Zdzienicka, 2016. "The Effects of Monetary Policy Shocks on Inequality," IMF Working Paper WP/16/245.
- Gornemann, Nils, Keith Kuester, and Makoto Nakajima. 2014. "Doves for the Rich, Hawks for the Poor? Distributional Consequences of Monetary Policy." Manuscript. Available at <http://www.compmacro.com/makoto/paper/GKN-paper-140326.pdf>.
- Gorodnichenko, Yuriy, and Michael Weber, 2016. "Are Sticky Prices Costly? Evidence From The Stock Market," *American Economic Review* 106(1), 165-199.
- Guerrieri, Veronica and Guido Lorenzoni. 2015. "Credit Crises, Precautionary Savings, and the Liquidity Trap." Manuscript. Available at <https://www.dropbox.com/s/gj011ty6zxfmkjn/Credit%20Crises%20WP.pdf?dl=1>.
- Guvenen, Fatih, Serdar Ozkan, and Jae Song. 2014. "The Nature of Countercyclical Income Risk," *Journal of Political Economy* 122(3), 621-660.
- Heathcote, Jonathan, Fabrizio Perri, and Giovanni L. Violante, 2010. "Unequal We Stand: An Empirical Analysis of Economic Inequality in the U.S., 1967-2006." *Review of Economic Dynamics* 13(1) 15-51.
- Ireland, Peter N., 2006. "Changes in the Federal Reserve's Inflation Target: Causes and Consequences," *Journal of Money, Credit and Banking* 39(8) 1851-1882.

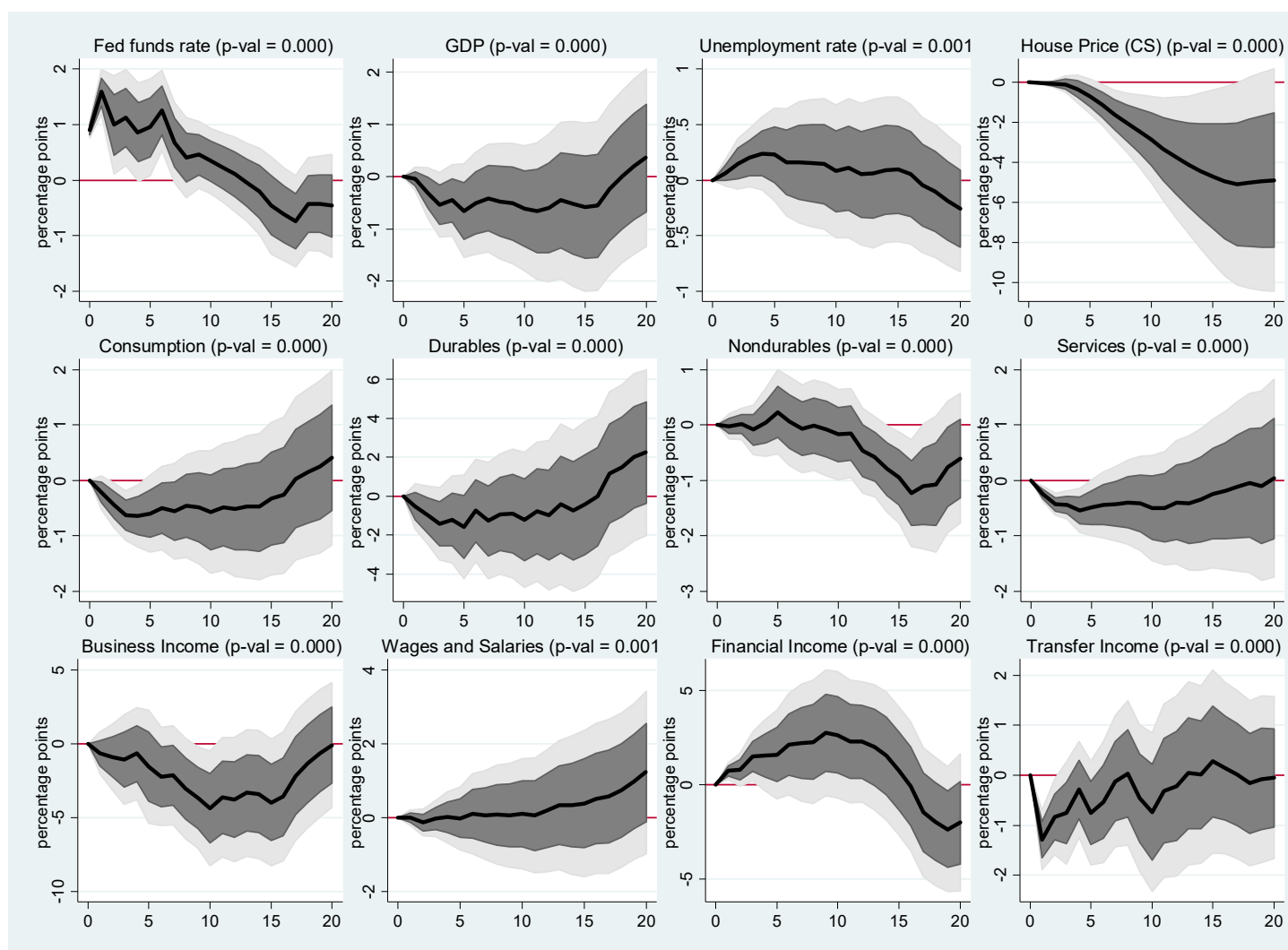
- Jordà, Òscar, 2005. "Estimation and Inference of Impulse Responses by Local Projections." *American Economic Review* 95(1), 161-182.
- Kaplan, Greg, Benjamin Moll, Giovanni L. Violante. 2016. "Monetary Policy According to HANK," NBER Working Paper 21897.
- Kozicki, Sharon and Peter A. Tinsley, 2009. "Perhaps the 1970s FOMC did what it said it did," *Journal of Monetary Economics* 56(6), 842-855.
- Krueger, Dirk, and Fabrizio Perri, 2005. "Does Income Inequality Lead to Consumption Inequality? Evidence and Theory," *Review of Economic Studies* 73(1), 163-193.
- Krueger, Dirk, Fabrizio Perri, Luigi Pistaferri, and Giovanni L. Violante, 2010. "Cross sectional Facts for Macroeconomists," *Review of Economic Dynamics* 13(1), 1-14.
- Kueng, Lorenz, 2012. "Tax News: Identifying the Household Consumption Response to Tax Expectations Using Municipal Bond Prices," Working Paper.
- Kumhof, Michael, Romain Rancière, and Pablo Winant, 2015. "Inequality, Leverage, and Crises." *American Economic Review* 105(3), 1217-45.
- Ledoit, Olivier, 2009. "The Redistributive Effects of Monetary Policy," Manuscript. Available at http://www.hec.unil.ch/documents/sem_ibf/Ledoit.pdf.
- Luetticke, Ralph, 2015. Transmission of Monetary Policy with Heterogeneity in Household Portfolios. Manuscript. Available at http://wiwi.uni-bonn.de/hump/luetticke/docs/Luetticke_JMP.pdf.
- McKay, Alisdair, and Ricardo Reis. 2016. "The Role of Automatic Stabilizers in the U.S. Business Cycle," *Econometrica* 84(1), 141-194.
- Mersch, Yves, 2014. "Monetary Policy and Economic Inequality." Keynote Speech, Corporate Credit Conference, October 17, 2014.
- Mumtaz, Haroon, and Angeliki Theophilopoulou, 2016. "The Impact of Monetary Policy on Inequality in the UK. An Empirical Analysis." Queen Mary, University of London Working Paper No. 783.
- Pagan, Adrian, 1984. "Econometric Issues in the Analysis of Regressions with Generated Regressors," *International Economic Review* 25(1), 221-247.
- Parker, Jonathan A., 1999. "The Reaction of Household Consumption to Predictable Changes in Social Security Taxes," *American Economic Review* 89(4), 959-973.
- Parker, Jonathan A., and Annette Vissing-Jørgensen. "Who Bears Aggregate Fluctuations and How?" *American Economic Review* 99.2 (2009): 399-405.
- Piketty, Thomas, and Emmanuel Saez, 2003. "Income Inequality in the United States, 1913-1998," *Quarterly Journal of Economics* 118(1), 1-39.
- Rajan, R. 2010. *Fault Lines*, Princeton University Press, Princeton N.J.
- Romer, Christina D., and David H. Romer, 1998. "Monetary Policy and the Well-Being of the Poor," in *Income Inequality: Issues and Policy Options* (Federal Reserve Bank of Kansas City), 159-201.
- Romer, Christina D., and David H. Romer, 2004. "A New Measure of Monetary Shocks: Derivation and Implications," *American Economic Review* 94(4), 1055-1084.
- Taylor, John B. 1993. "Discretion versus policy rules in practice," *Carnegie-Rochester Conference Series on Public Policy* 39, pp. 195-214.
- Taylor, John. 2007 "Housing and Monetary Policy," Speech at the Federal Reserve Bank of Kansas City Symposium on Housing, Housing Finance, and Monetary Policy.
- Villarreal, Francisco G., 2014. "Monetary Policy and Inequality in Mexico," Manuscript. Available at https://mpira.ub.uni-muenchen.de/57074/1/MPRA_paper_57074.pdf.
- Williamson, Stephen D., 2009. "Monetary Policy and Distribution," *Journal of Monetary Economics* 55(6), 1038-1053.
- Wong, Arlene, 2015. "Population Aging and the Transmission of Monetary Policy to Consumption", manuscript. Available at http://sites.northwestern.edu/awo760/files/2015/10/Arlene_Wong_JMP_Latest-2g9f9ga.pdf.

FIGURE 1: INEQUALITY IN TOTAL INCOME, LABOR EARNINGS, EXPENDITURES AND CONSUMPTION IN THE UNITED STATES.



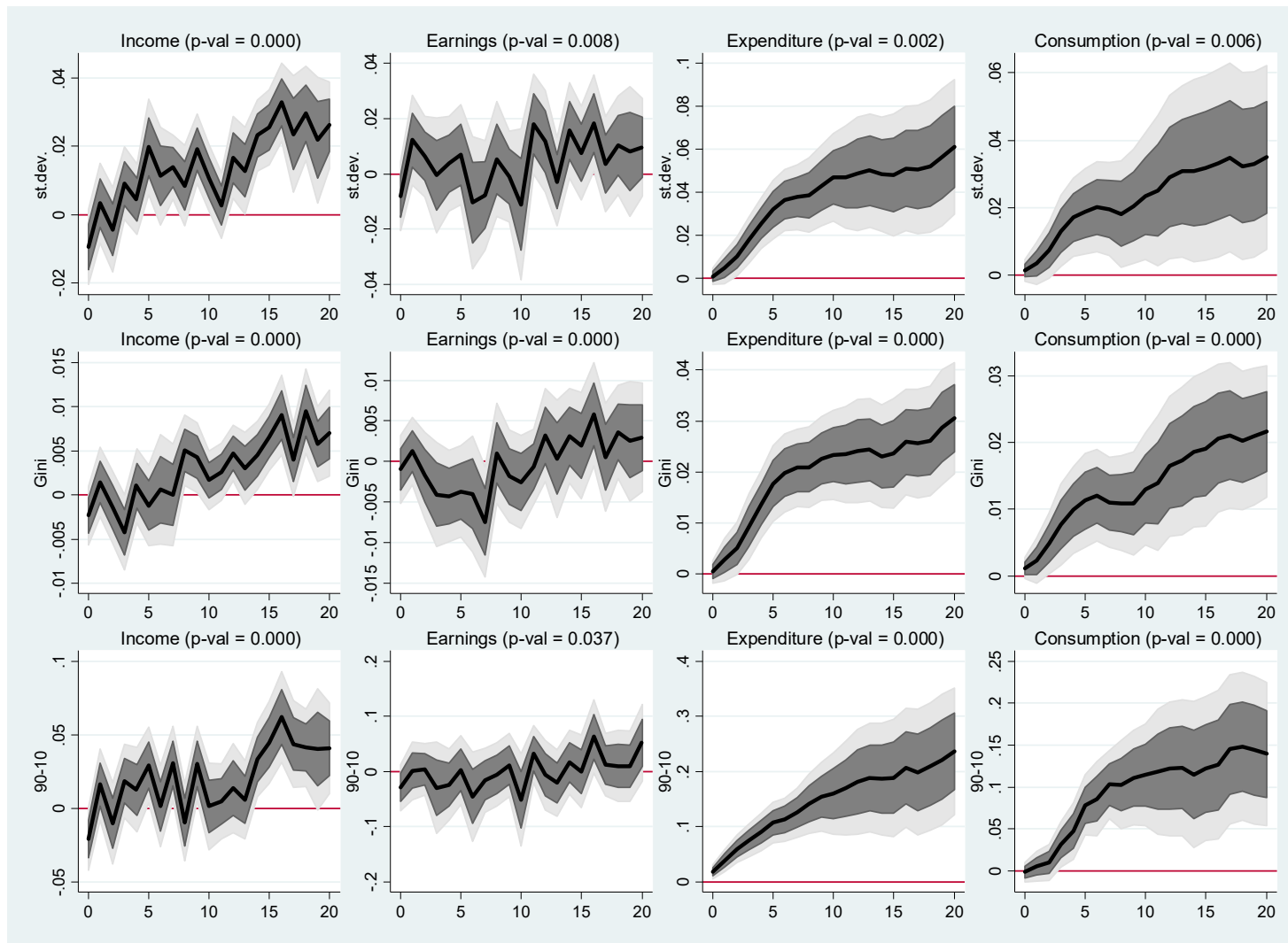
Note: All inequality measures are averaged over previous and subsequent quarters, i.e., center three-quarter moving average. Grey shaded areas are U.S. recessions. See section 2.3 in the text.

FIGURE 2: EFFECTS OF MONETARY POLICY SHOCKS ON MACROECONOMIC VARIABLES



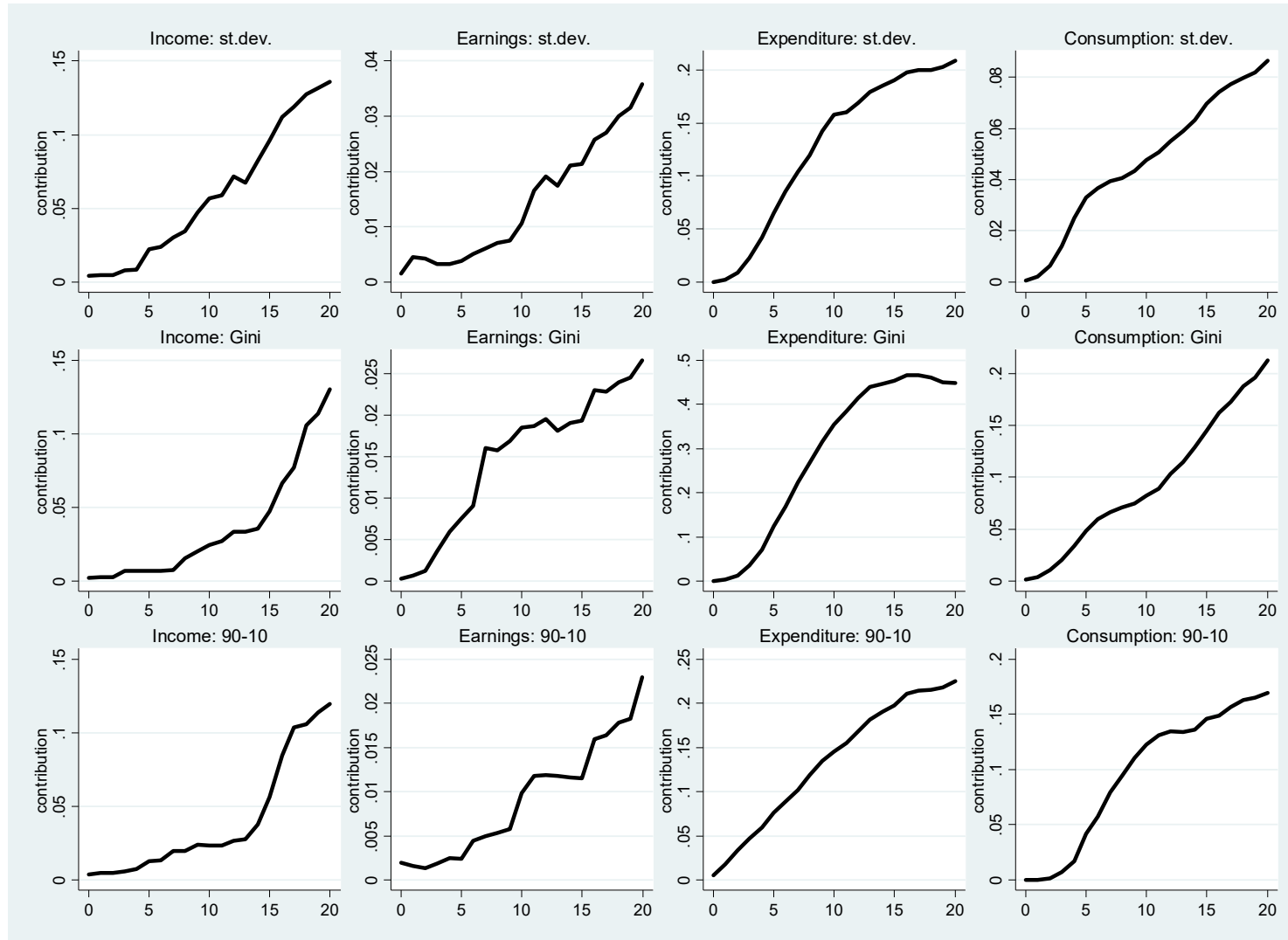
Note: The figure presents impulse responses of macroeconomic variables to 100 b.p. contractionary monetary policy shocks. Time (horizontal axis) is in quarters. The dark and light grey shaded areas indicate one and 1.65 standard deviation confidence intervals respectively. Consumption and income variables (the middle and bottom rows) and GDP are deflated with GDP deflator. “p-val” are for the null hypothesis that the impulse response is zero for every quarter plotted. See section 3.1 for details.

FIGURE 3: RESPONSE OF ECONOMIC INEQUALITY TO A CONTRACTIONARY MONETARY POLICY SHOCK



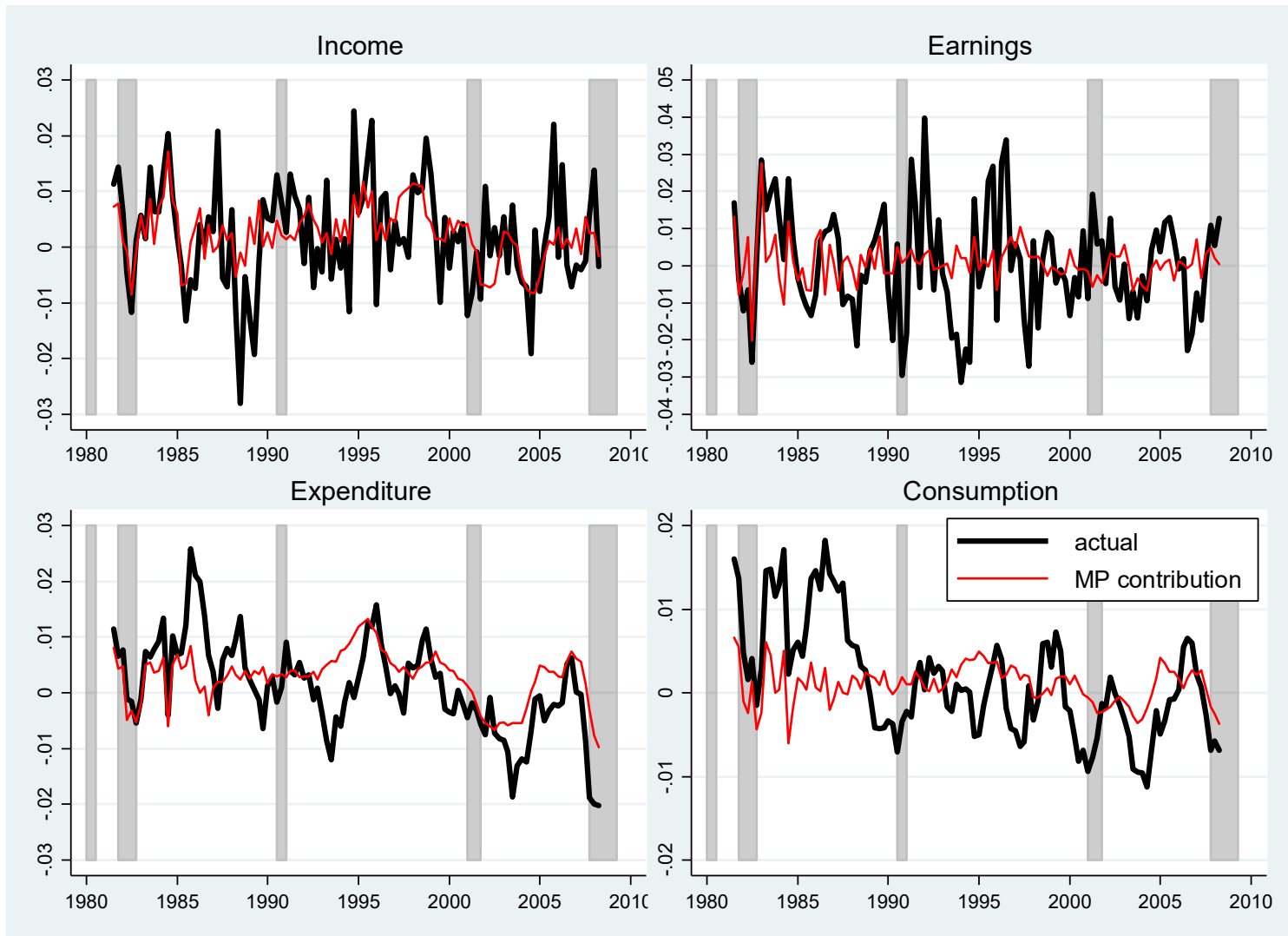
Notes: The figure plots impulse responses (solid line) as well as one and 1.65 standard deviation confidence intervals (dark and light grey shaded areas respectively) of inequality measures for total income (first column), salary income (second column), total expenditures (third column), and consumption (fourth column) in response to a 1 percentage point (100 b.p.) contractionary monetary policy shock. Inequality is measured using the cross-sectional standard deviation (first row), Gini coefficient (second row), and the log difference between the 90th and 10th percentiles of the cross-sectional distribution. Impulse responses are at the quarterly frequency using data from 1980Q1:2008Q4. Time (horizontal axis) is in quarters. “P-val” are for the null hypothesis that the impulse response is zero for every quarter plotted. See section 3.2 for details.

FIGURE 4: CONTRIBUTION OF MONETARY POLICY SHOCKS TO FORECAST ERROR VARIANCE OF INEQUALITY



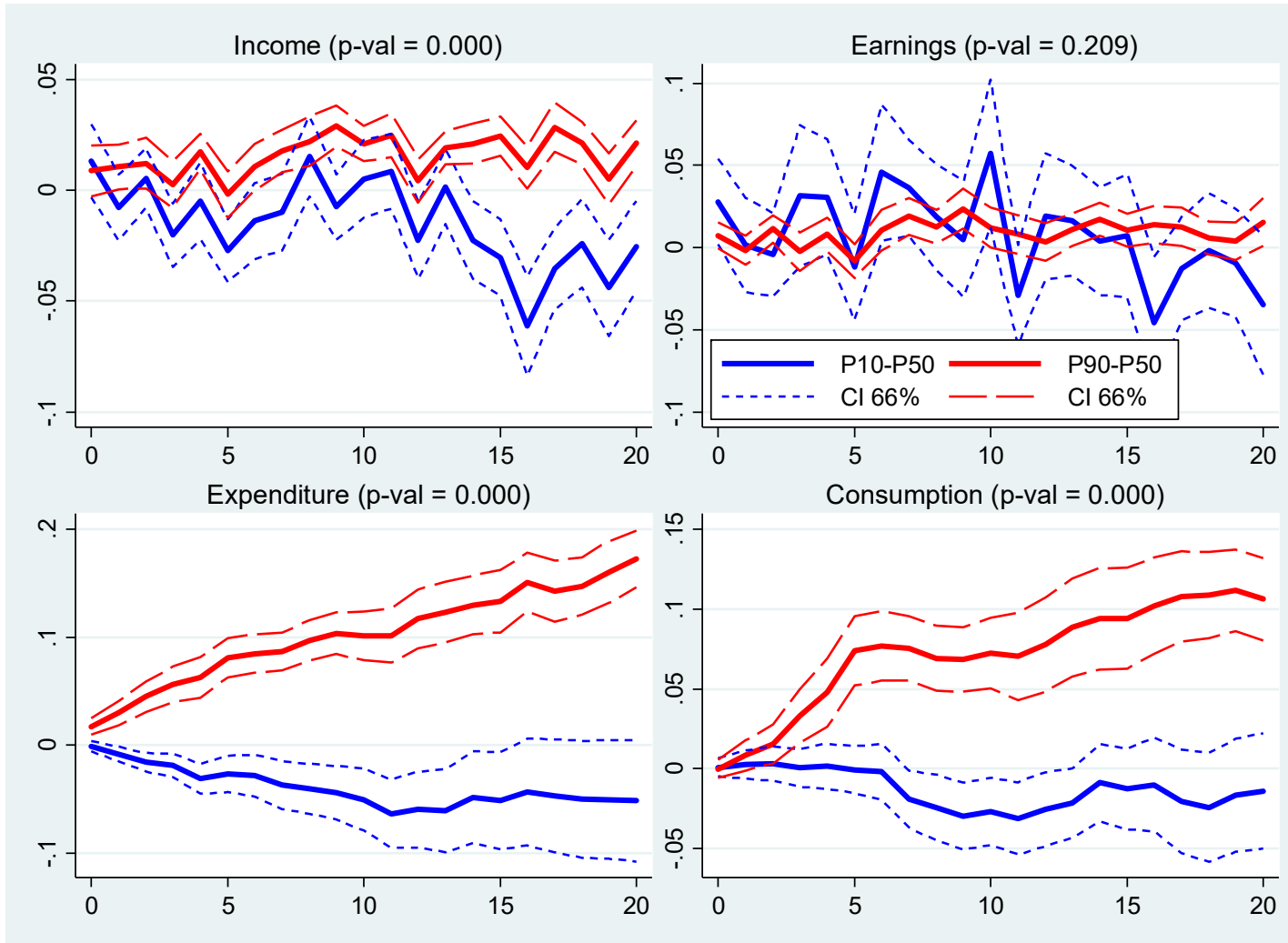
Note: The figure plots the contribution of monetary policy shocks to the forecast error variance of economic inequality at different time horizons (in quarters). See section 3.4 in the text for details.

FIGURE 5: THE CONTRIBUTION OF MONETARY POLICY SHOCKS TO HISTORICAL VARIATION IN U.S. INEQUALITY



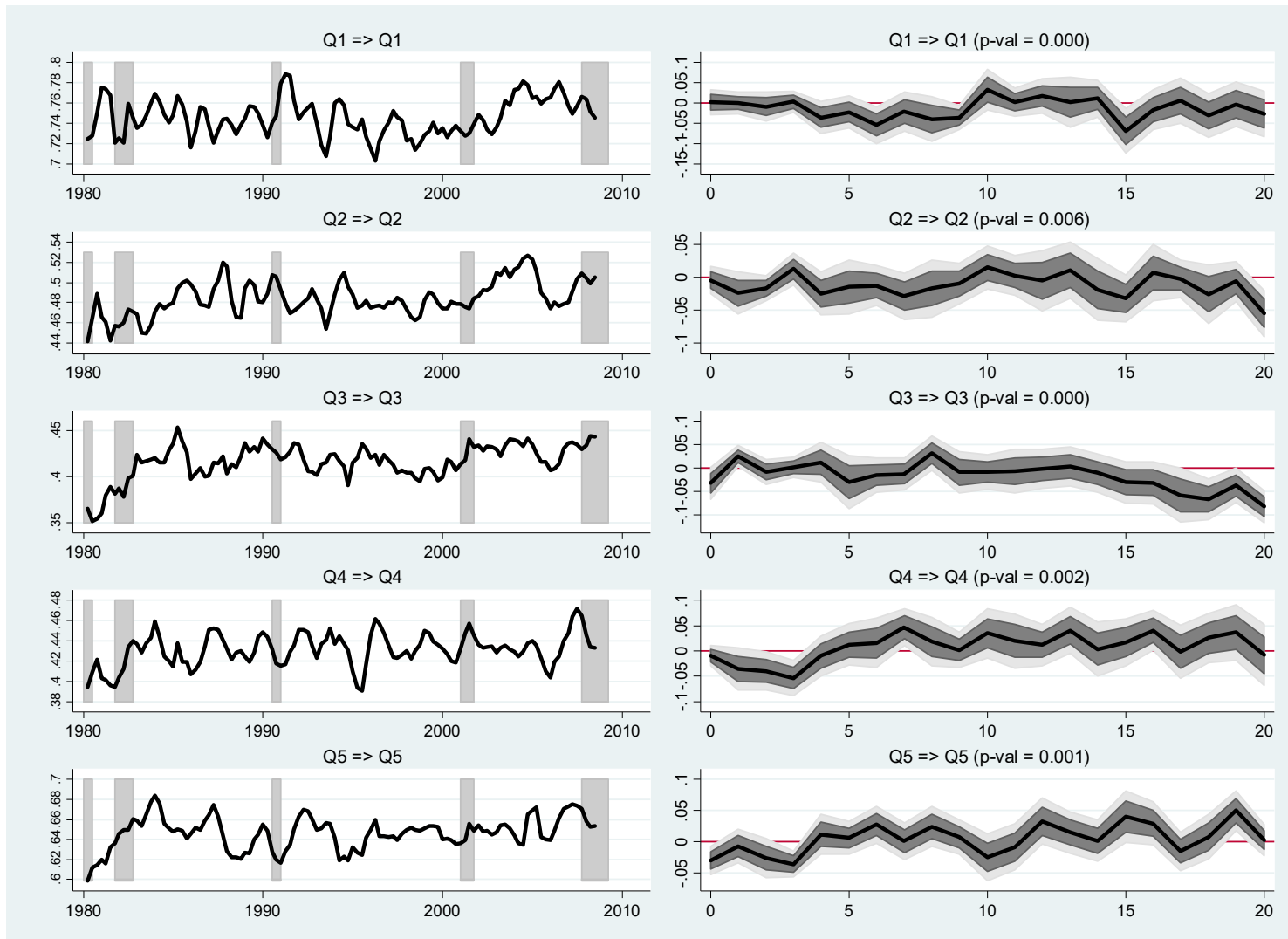
Notes: The figure plots the predicted changes of different measures of U.S. inequality due only to monetary policy shocks (thin red lines) versus the actual changes of inequality measures (thick black lines). Inequality is measured using the cross-sectional standard deviation. All plotted series are centered three-quarter moving averages. Grey shaded areas are U.S. recessions. See section 3.4 for details.

FIGURE 6: DISTRIBUTIONAL EFFECTS OF CONTRACTIONARY MONETARY POLICY SHOCK BY PERCENTILES



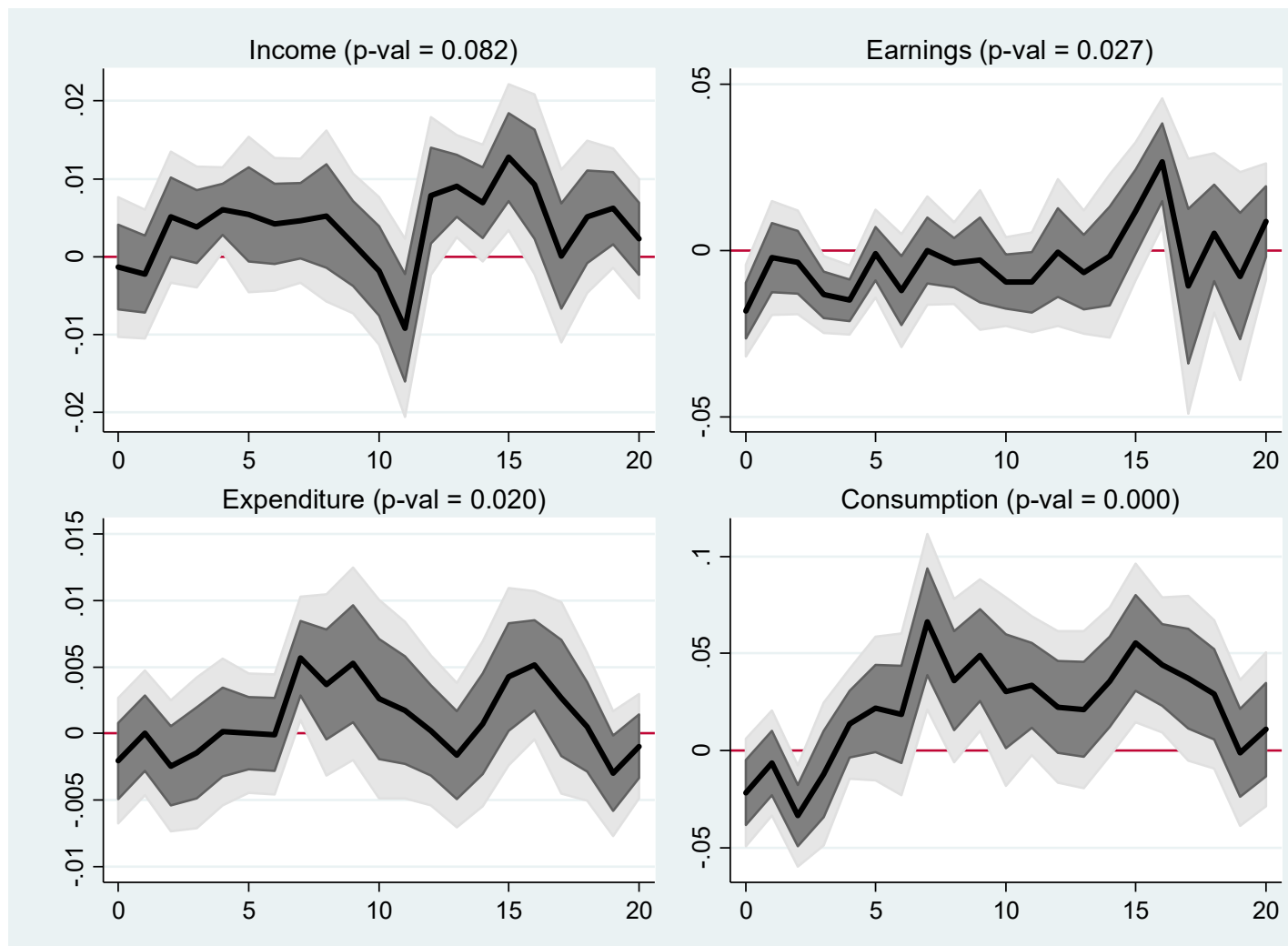
Notes: The figure plots the responses of the log differences between the 90th and 50th percentiles (red solid line) as well as the log difference between the 10th and 50th percentiles (blue solid line) of income, earnings, expenditure and consumption distributions of households in the CEX to a 1 percentage point (100 b.p.) contractionary monetary policy shock using quarterly data from 1980Q1-2008Q4. Time (horizontal axis) is in quarters. Dashed lines show 66% (one standard deviation) confidence bands. “P-val” are for the null hypothesis that the difference between the two impulse responses in each figure is zero for every quarter plotted. See section 4.1 for details.

FIGURE 7: TIME-VARYING PROBABILITIES OF TRANSITIONING BETWEEN CONSUMPTION QUINTILES



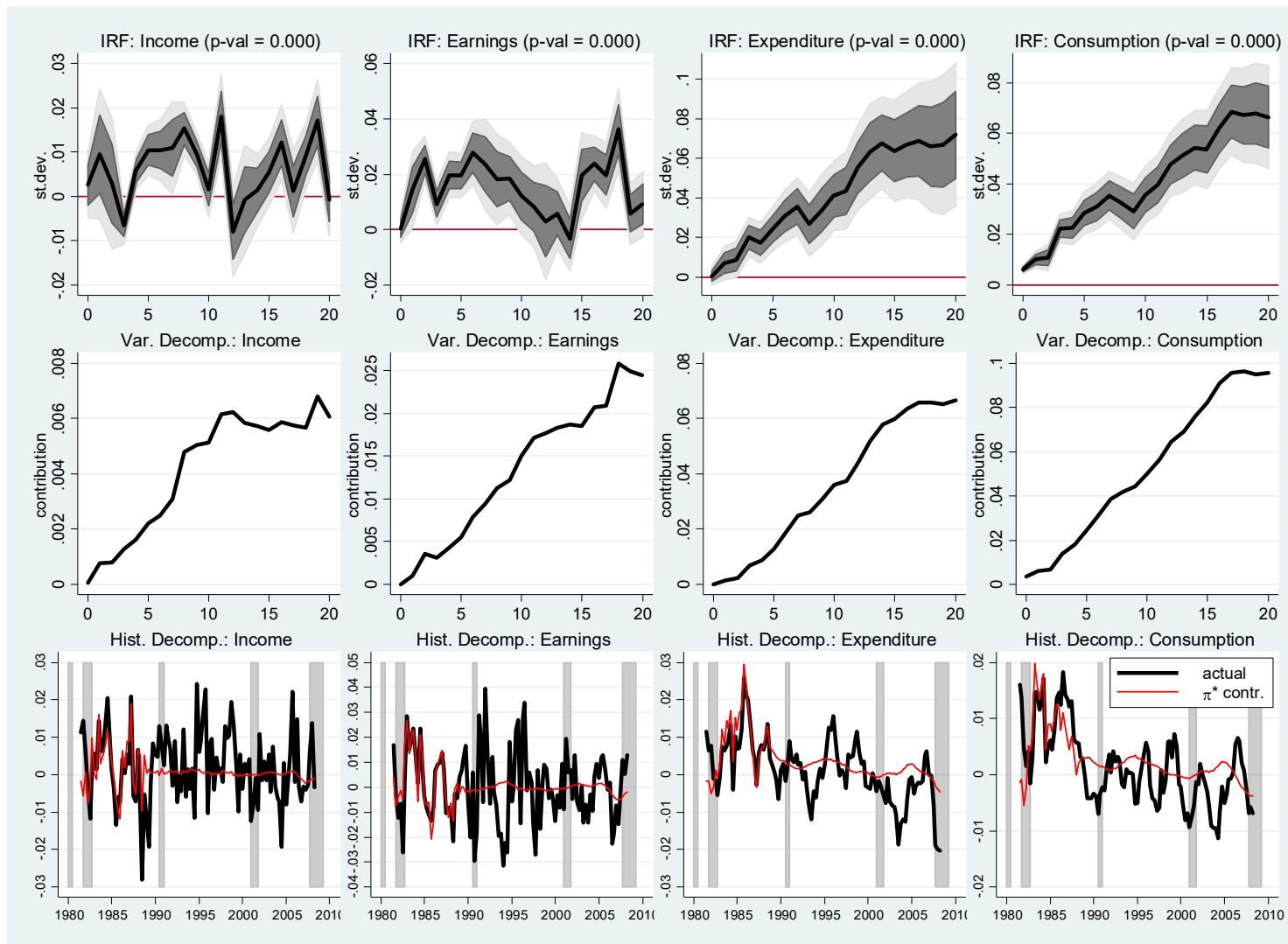
Note: The left column of the figure plots the frequency of households staying in the same quintile of the consumption (of non-durables and services) distribution from one quarter to the next. Grey shaded areas are U.S. recessions. The right column shows the response of these probabilities—as well as one and 1.65 standard deviation confidence intervals (dark and light grey shaded areas respectively)—to a squared monetary policy shock. Time (horizontal axis) is in quarters. See section 4.2 for details.

FIGURE 8: INCOME AND CONSUMPTION RESPONSES OF HIGH AND LOW NET-WORTH HOUSEHOLDS



Notes: The figures plot the impulse responses of the differences for mean log income, labor earnings, expenditures and consumption between high net-worth and low net-worth households to a 1 percentage point (100 b.p.) contractionary monetary policy shock. Definitions of low and high net-worth households are in section 4.3 in the text. Dark and light grey shaded areas represent one and 1.65 standard deviation confidence intervals respectively. Time (horizontal axis) is in quarters. “P-val” are for the null hypothesis that the impulse response is zero for every quarter plotted.

FIGURE 9: RESPONSE OF INEQUALITY TO PERMANENT INCREASES IN THE INFLATION TARGET



Note: The first row plots impulse responses and confidence intervals (one and 1.65 standard deviation confidence intervals; dark and light grey shaded areas respectively) of the effects of a permanent 1 percentage point decrease in the inflation target on economic inequality (measured using cross-sectional standard deviations). Time (horizontal axis) is in quarters. The second row plots the contribution of changes in inflation target to forecast error variance of inequality measures. Time (horizontal axis) is in quarters. The bottom row plots the historical contribution of target inflation shocks to changes in inequality. All plotted series are centered three-quarter moving averages. Grey shaded areas are U.S. recessions. Target inflation shocks are updated from Coibion and Gorodnichenko (2011). See section 5 for details.

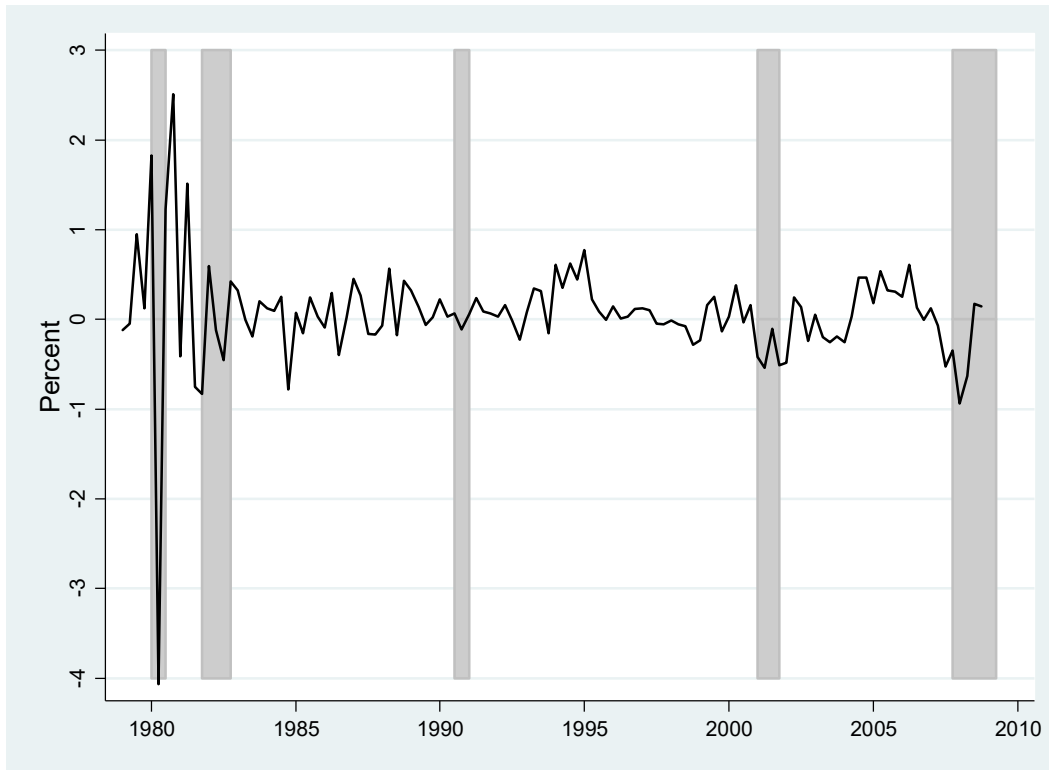
TABLE 1: CORRELATIONS OF INEQUALITY MEASURES WITH MACROECONOMIC VARIABLES

Panel A: Correlation with the Quarterly Inflation Rate			
	Corr(π ,SD)	Corr(π ,Gini)	Corr(π ,90 th -10 th)
Income Inequality	-0.06	-0.11	0.01
Earnings Inequality	0.01	-0.19	0.06
Expenditures Inequality	-0.04	-0.08	-0.01
Consumption Inequality	0.10	0.05	0.04
Panel B: Correlation with the Unemployment Rate			
	Corr(UE,SD)	Corr(UE,Gini)	Corr(UE,90 th -10 th)
Income Inequality	0.00	0.18	-0.05
Earnings Inequality	-0.02	0.37	0.02
Expenditures Inequality	-0.31	-0.24	-0.25
Consumption Inequality	-0.26	-0.23	-0.24
Panel C: Correlation with the Federal Funds Rate			
	Corr(FFR,SD)	Corr(FFR,Gini)	Corr(FFR,90 th -10 th)
Income Inequality	-0.12	-0.19	-0.04
Earnings Inequality	-0.04	-0.31	-0.11
Expenditures Inequality	0.02	-0.03	0.01
Consumption Inequality	0.13	0.05	0.13

Notes: The table presents correlations of income, labor earnings, expenditures and consumption inequality measures with the quarterly chained GDP Deflator inflation rate (π , Panel A), unemployment rate (UE, Panel B), and the Effective Federal Funds Rate (FFR, Panel C). Correlations are done with respect to inequality measured using the cross-sectional standard deviations (first column), the Gini coefficient (second column), and the log difference between the 90th and 10th percentiles of the cross-sectional distribution (third column). All series are HP-filtered prior to measuring correlations. The measures of unemployment and the Federal Funds rate are averages over each quarter. All data are from 1980Q1 to 2008Q4.

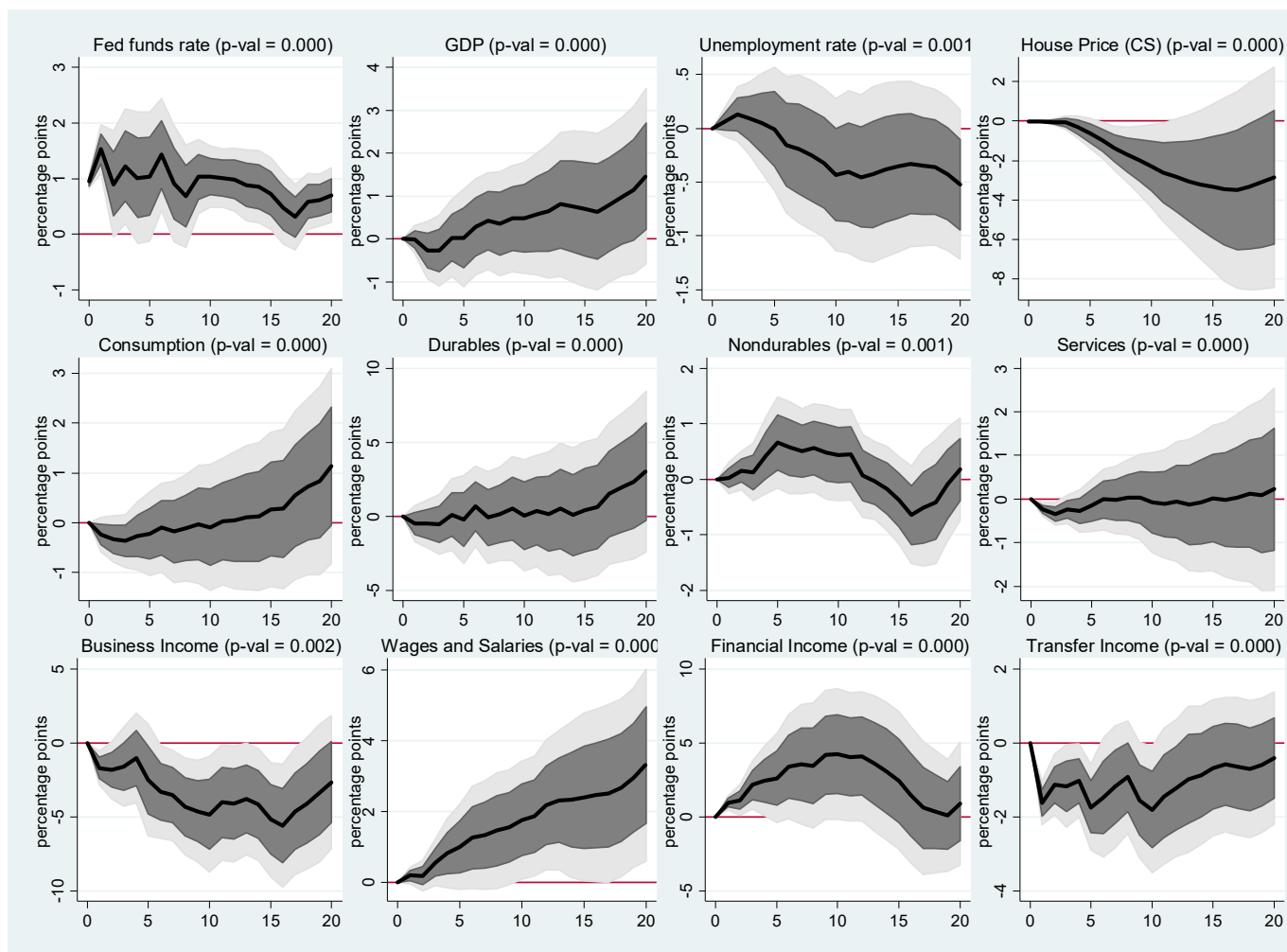
Not For Publication Appendix

APPENDIX FIGURE 1: MONETARY POLICY SHOCKS



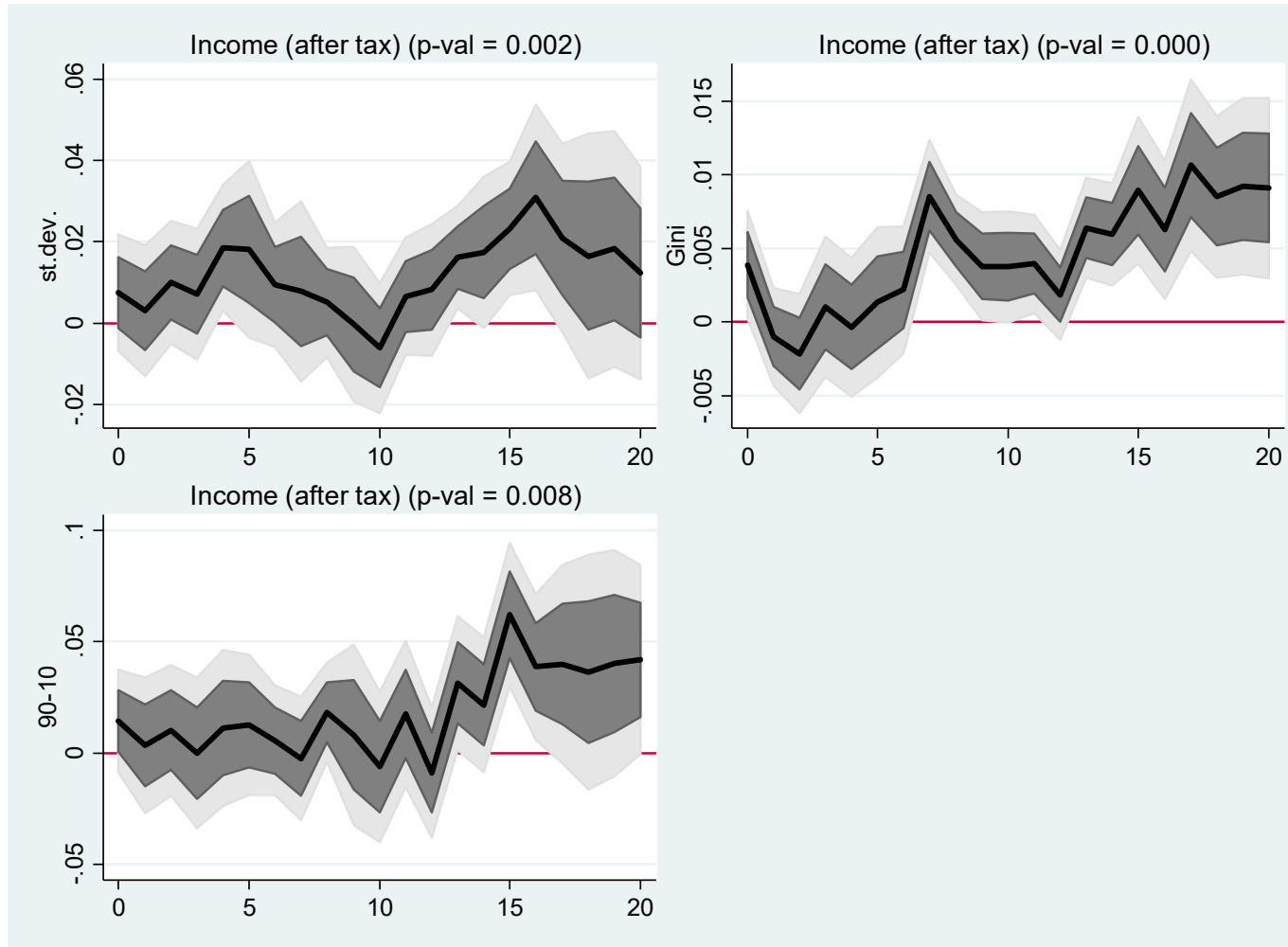
Note: The figure plots the quarterly sum of monetary policy shocks as identified in Romer and Romer (2004). See section 3.1 for details.

APPENDIX FIGURE 2: EFFECTS OF MONETARY POLICY SHOCKS ON MACROECONOMIC VARIABLES IN POST-1979 PERIOD



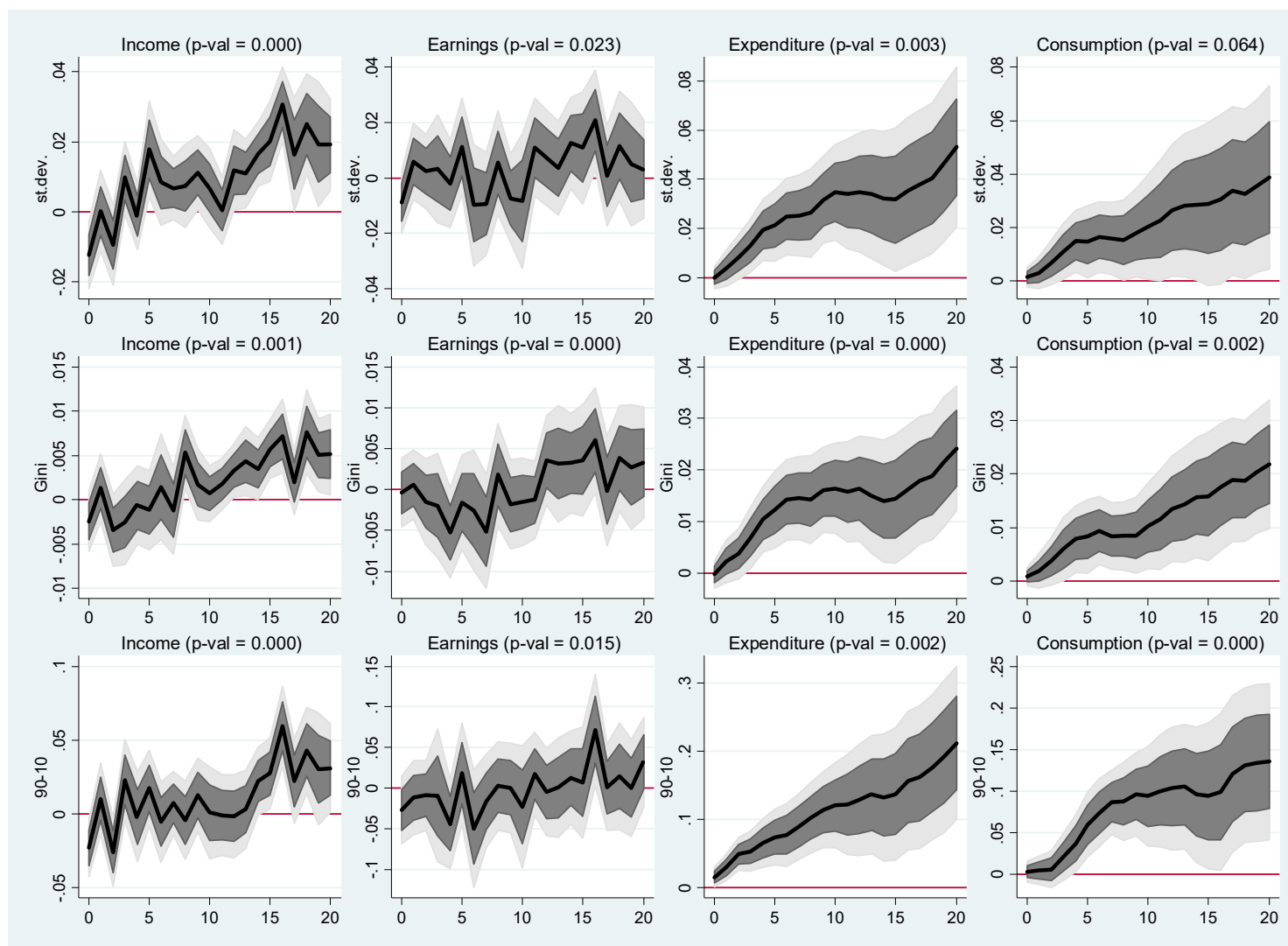
Note: The figure presents impulse responses of macroeconomic variables to 100 b.p. contractionary monetary policy shocks using data starting in 1980. The dark and light grey shaded areas indicate one and 1.65 standard deviation confidence intervals respectively. Time (horizontal axis) is in quarters. “P-val” are for the null hypothesis that the impulse response is zero for every quarter plotted. See section 3.2 for details.

APPENDIX FIGURE 3: EFFECTS OF MONETARY POLICY SHOCKS ON AFTER-TAX INCOME INEQUALITY



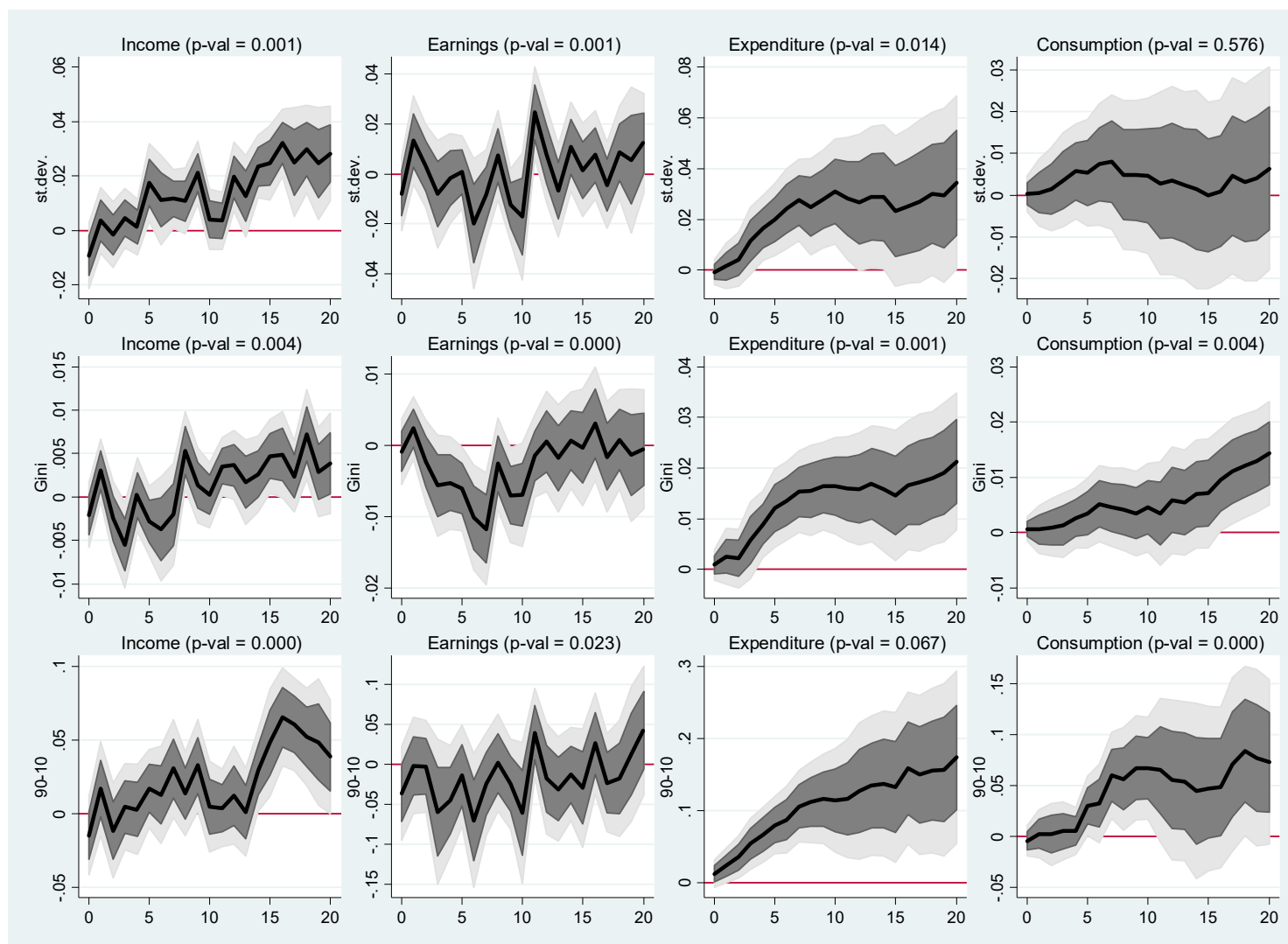
Note: The figure presents impulse responses of income inequality to 100 b.p. contractionary monetary policy shocks, where income is measured after taxes. The dark and light grey shaded areas indicate one and 1.65 standard deviation confidence intervals respectively. Time (horizontal axis) is in quarters. “P-val” are for the null hypothesis that the impulse response is zero for every quarter plotted. See section 3.2 for details.

APPENDIX FIGURE 4: ROBUSTNESS OF BASELINE INEQUALITY RESULTS TO SHORTER MA LAGS



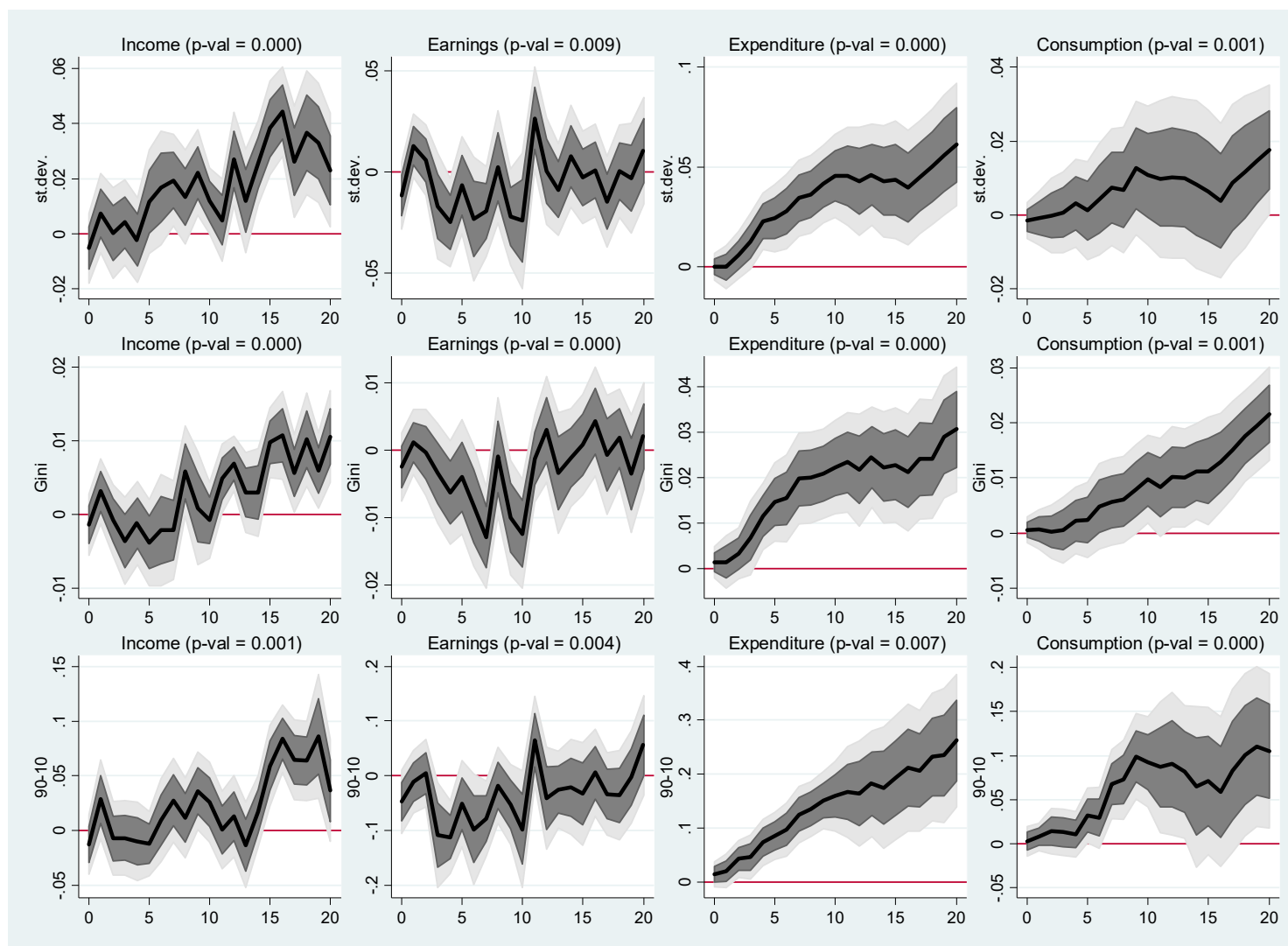
Note: The figure presents impulse responses of income inequality to 100 b.p. contractionary monetary policy shocks, using $I=12$ lags of monetary policy shocks. The dark and light grey shaded areas indicate one and 1.65 standard deviation confidence intervals respectively. Time (horizontal axis) is in quarters. “P-val” are for the null hypothesis that the impulse response is zero for every quarter plotted. See section 3.3 for details.

APPENDIX FIGURE 5: ROBUSTNESS OF BASELINE INEQUALITY RESULTS TO LONGER AR LAGS



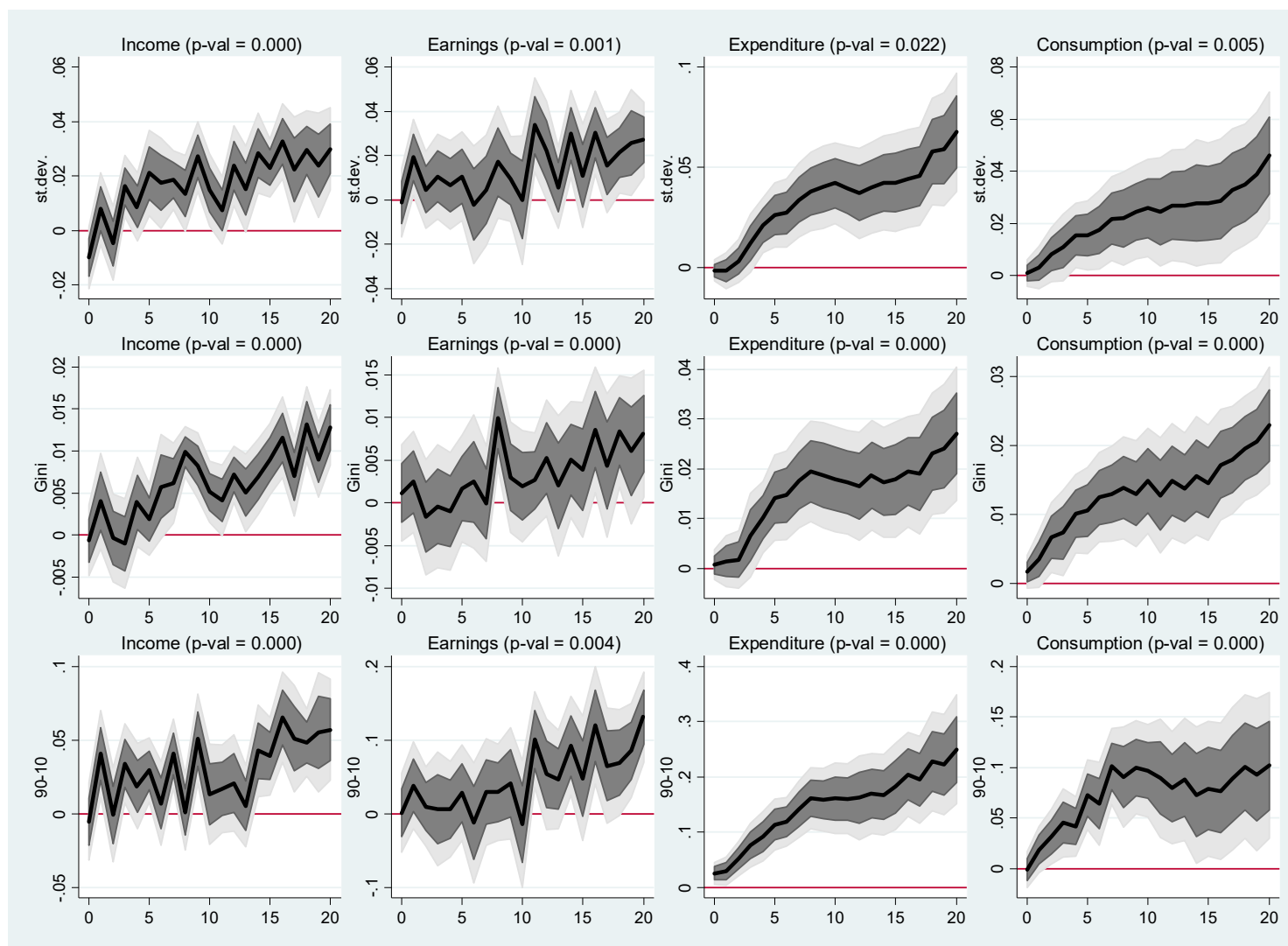
Note: The figure presents impulse responses of income inequality to 100 b.p. contractionary monetary policy shocks, using $J=4$ lags of dependent variable. The dark and light grey shaded areas indicate one and 1.65 standard deviation confidence intervals respectively. Time (horizontal axis) is in quarters. “P-val” are for the null hypothesis that the impulse response is zero for every quarter plotted. See section 3.3 for details.

APPENDIX FIGURE 6: ROBUSTNESS OF BASELINE INEQUALITY RESULTS TO DROPPING THE VOLCKER DISINFLATION



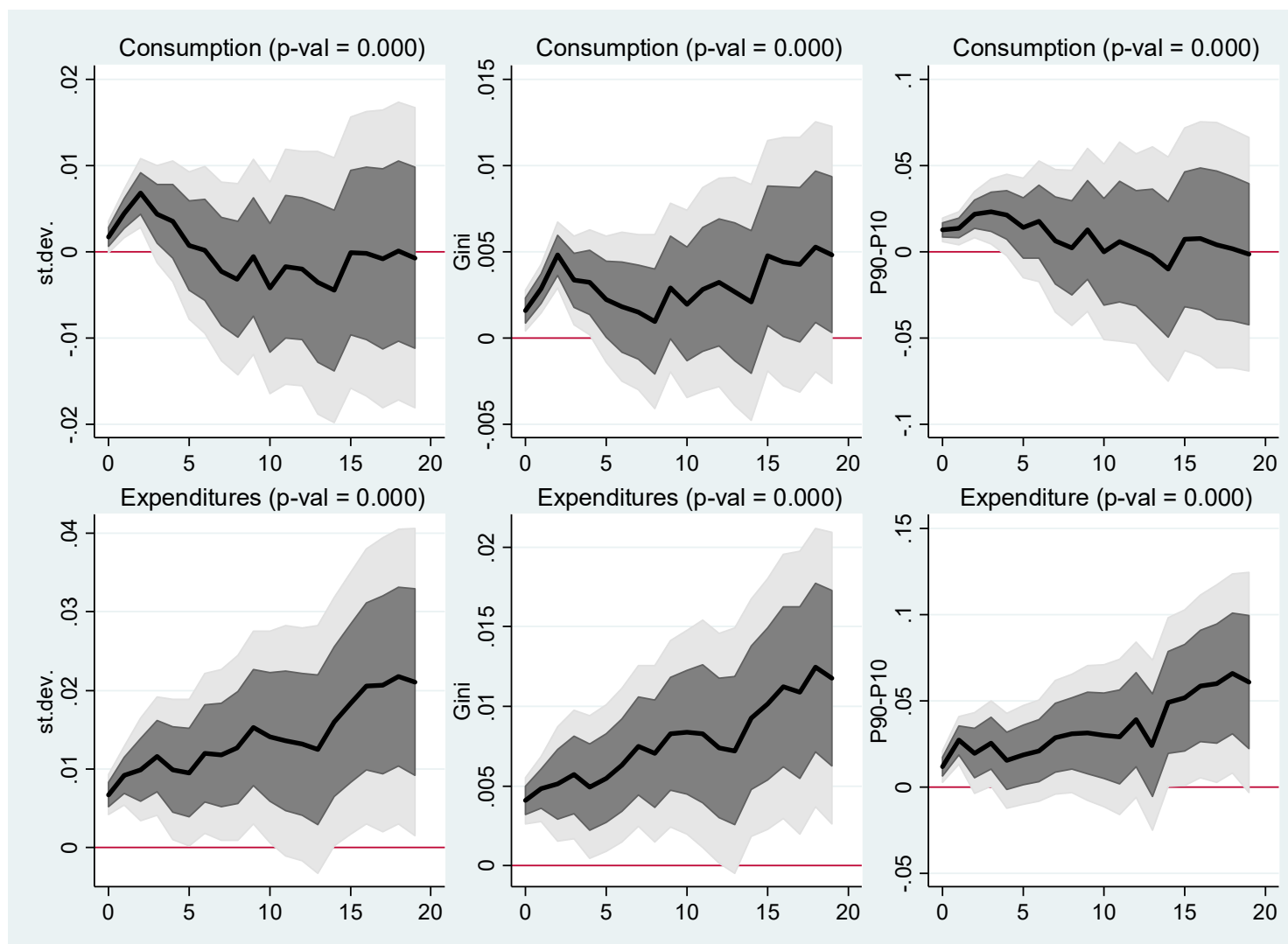
Note: The figure presents impulse responses of income inequality to 100 b.p. contractionary monetary policy shocks, starting the time period in 1985Q1. The dark and light grey shaded areas indicate one and 1.65 standard deviation confidence intervals respectively. Time (horizontal axis) is in quarters. “P-val” are for the null hypothesis that the impulse response is zero for every quarter plotted. See section 3.3 for details.

APPENDIX FIGURE 7: ROBUSTNESS OF BASELINE INEQUALITY RESULTS TO DROPPING ALL RECESSIONS



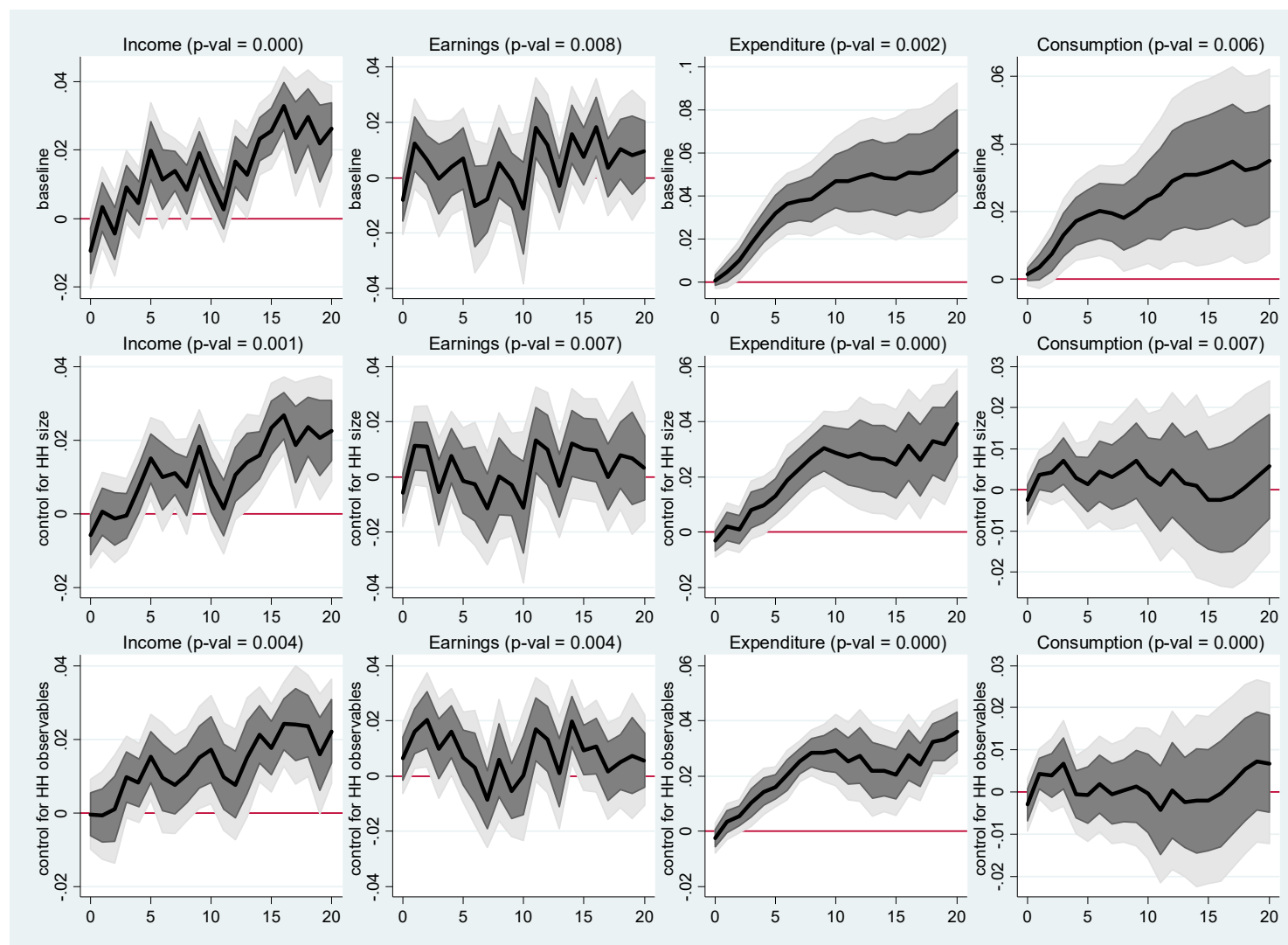
Note: The figure presents impulse responses of income inequality to 100 b.p. contractionary monetary policy shocks, dropping all recession periods. The dark and light grey shaded areas indicate one and 1.65 standard deviation confidence intervals respectively. Time (horizontal axis) is in quarters. “P-val” are for the null hypothesis that the impulse response is zero for every quarter plotted. See section 3.3 for details.

APPENDIX FIGURE 8: ROBUSTNESS OF CONSUMPTION AND EXPENDITURE INEQUALITY RESULTS TO ALTERNATIVE TIMING ASSUMPTIONS



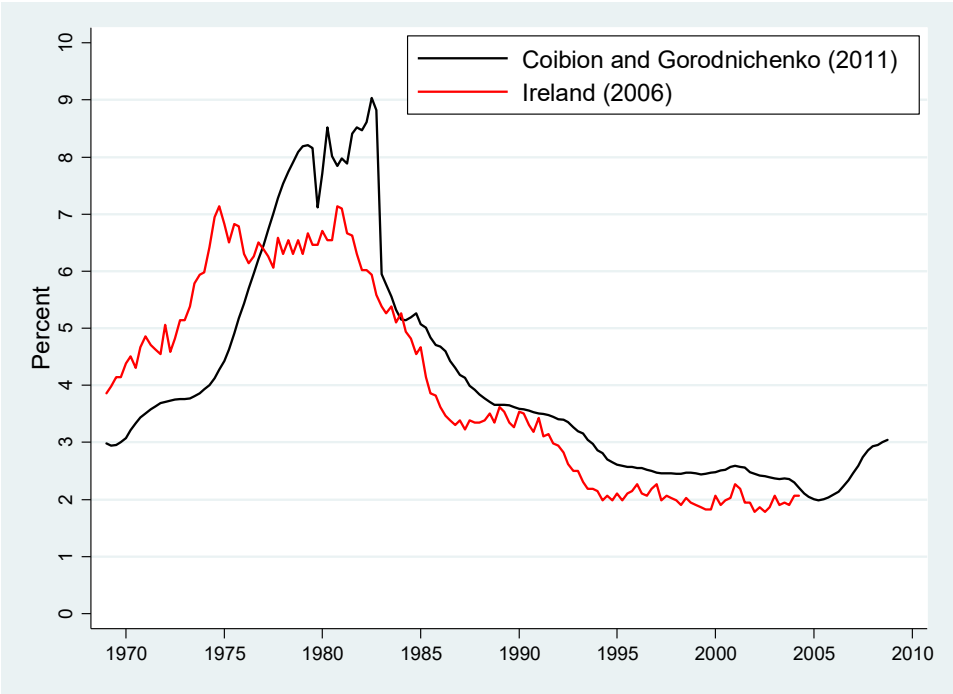
Note: The figure presents impulse responses of consumption and expenditure inequality to 100 b.p. contractionary monetary policy shocks, when analysis is done across cohorts as described in section 3.3 and Appendix A. The dark and light grey shaded areas indicate one and 1.65 standard deviation confidence intervals respectively. Time (horizontal axis) is in quarters. “P-val” are for the null hypothesis that the impulse response is zero for every quarter plotted. See section 3.3 for details.

APPENDIX FIGURE 9: ROBUSTNESS OF BASELINE INEQUALITY RESULTS TO CONTROLLING FOR HOUSEHOLD OBSERVABLE CHARACTERISTICS

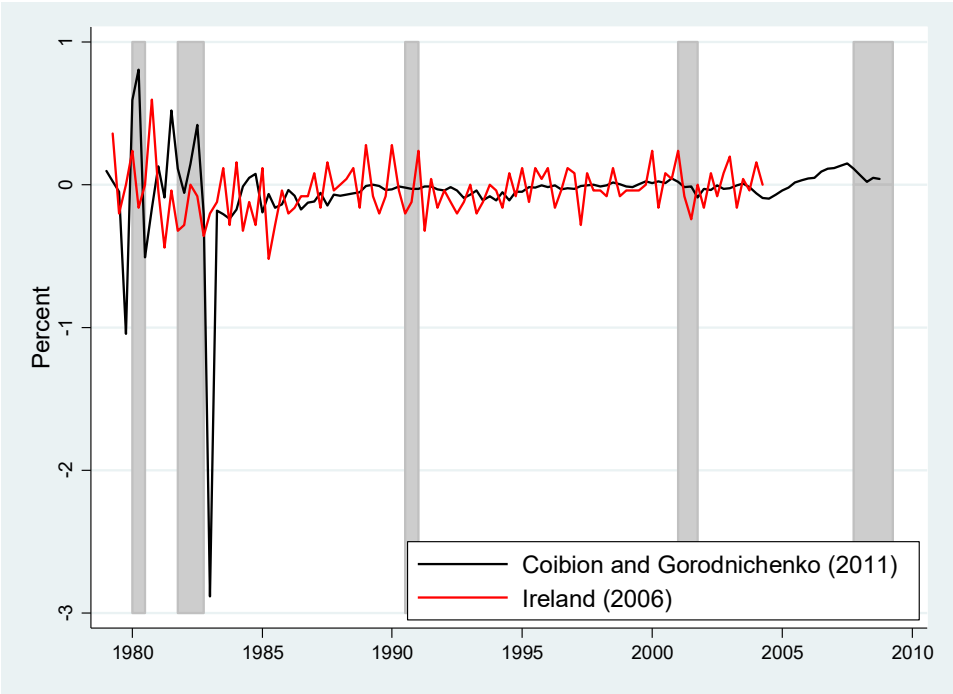


Notes: The figure plots impulse responses of inequality measures (cross-sectional standard deviations) for total income (first column), salary income (second column), total expenditures (third column), and consumption (fourth column) in response to a 1 percentage point (100 b.p.) contractionary monetary policy shock. The dark and light grey shaded areas indicate one and 1.65 standard deviation confidence intervals respectively. “P-val” are for the null hypothesis that the impulse response is zero for every quarter plotted. Time (horizontal axis) is in quarters. Row 1 includes benchmark measures of inequality, row 2 adjusts for household size (OECD equivalence scale), and row 3 controls for household observables. See section 3.3 for details.

APPENDIX FIGURE 10: LEVEL AND SHOCKS TO THE FEDERAL RESERVE'S TARGET RATE OF INFLATION
 Panel A. Target Rate

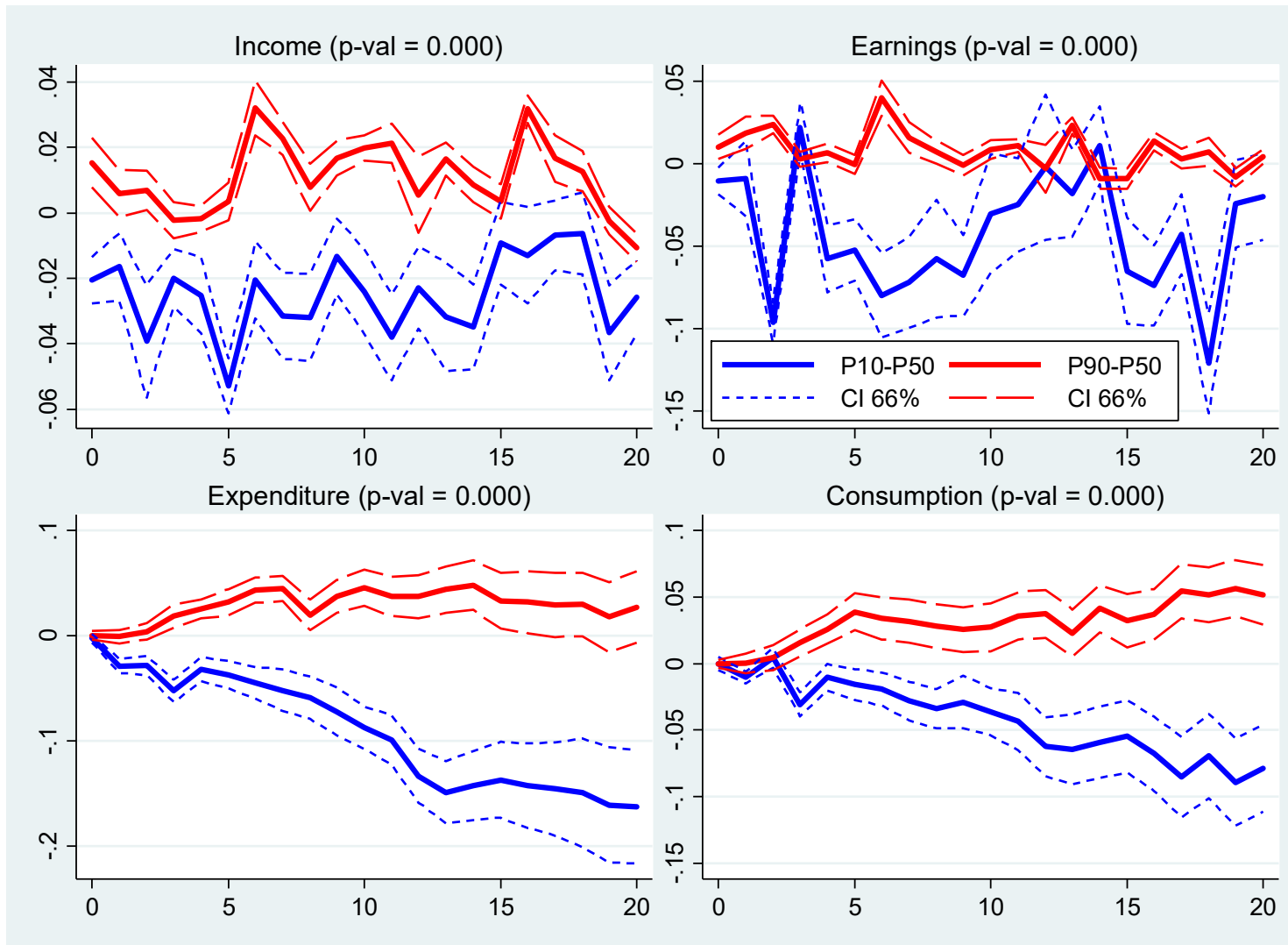


Panel B. Shocks to the Target Rate



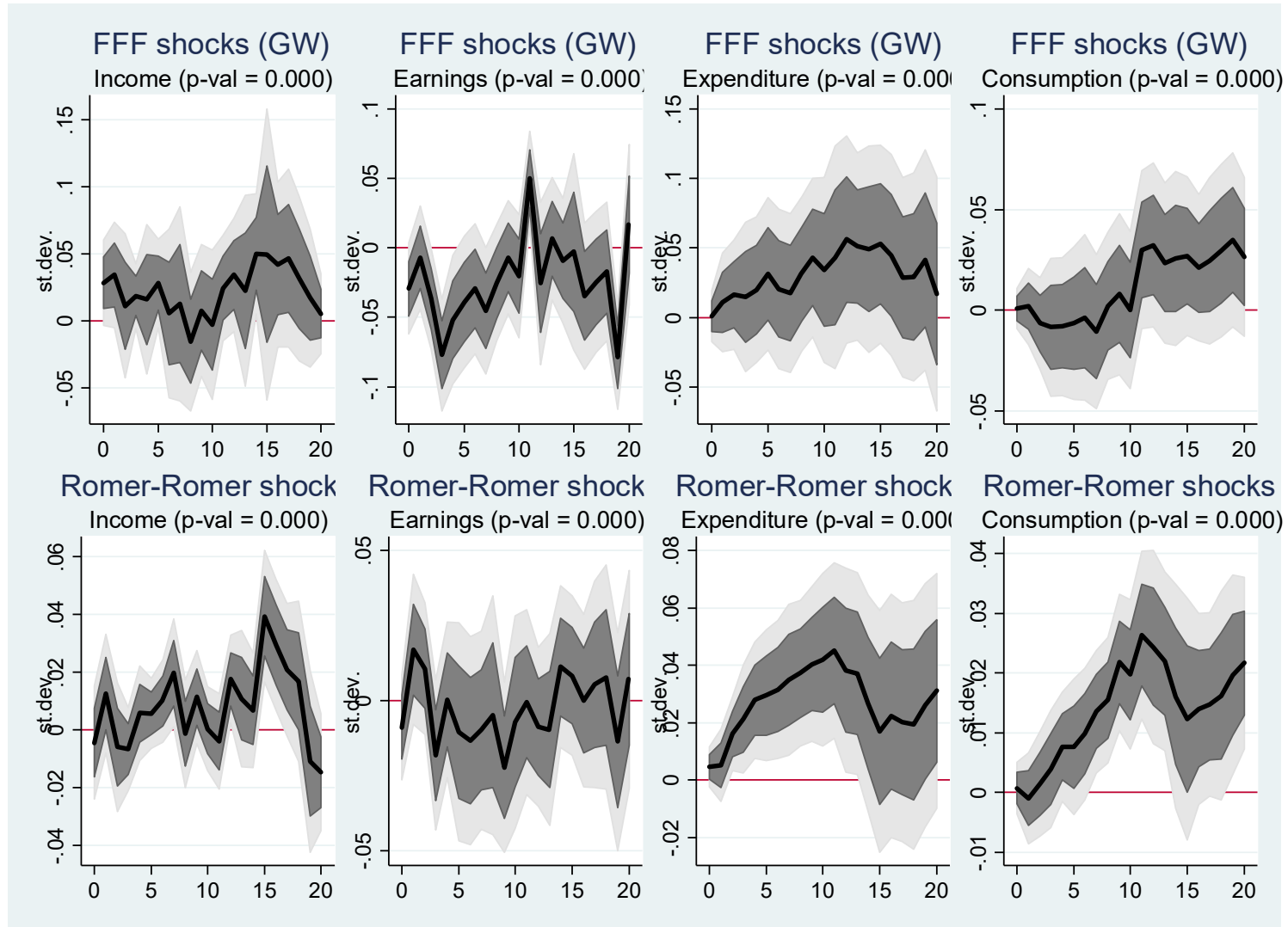
Notes: The figure plots two measures of shocks to the inflation target rate of the U.S. Federal Reserve as estimated by Ireland (2006) and Coibion and Gorodnichenko (2011). Grey shaded areas are U.S. recessions. See section 5 for details.

APPENDIX FIGURE 11: DISTRIBUTIONAL EFFECTS OF SHOCKS TO THE FED'S INFLATION TARGET



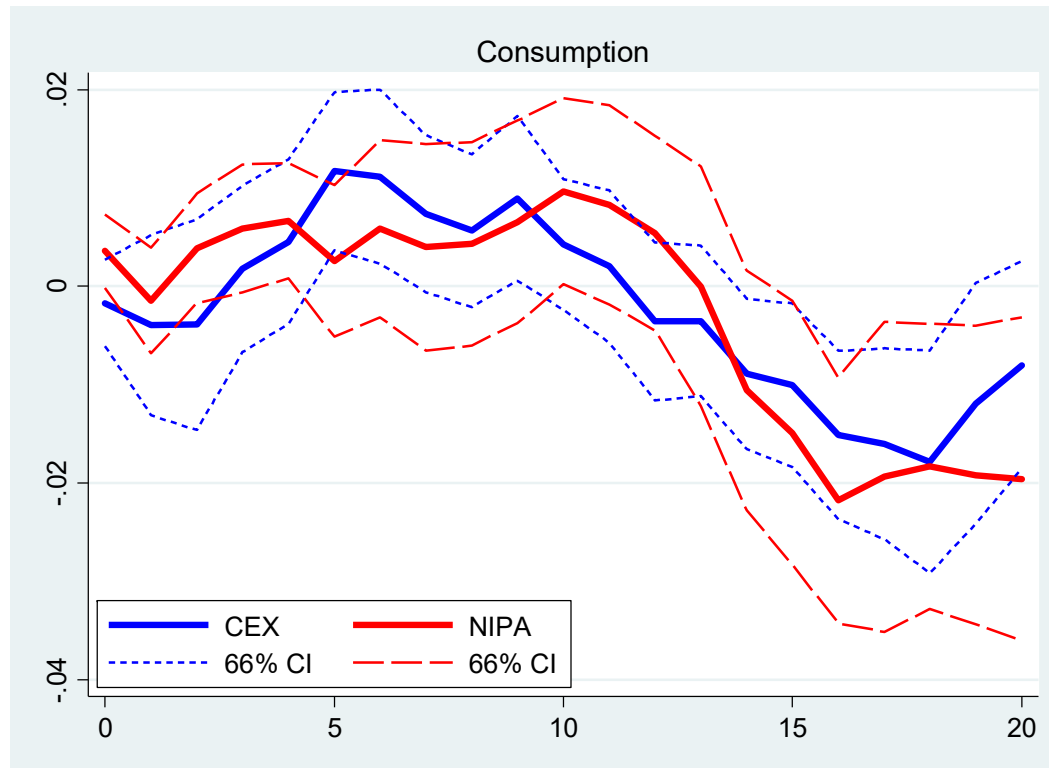
Notes: The figure plots the responses of the differences between the 90th and 50th percentiles (blue solid line) as well as the difference between the 10th and 50th percentiles (red solid line) of income, earnings, expenditure and consumption distributions of households in the CEX to a 1 percentage point (100 b.p.) decrease in the Fed's inflation target. Dashed lines show the 66% (one standard deviation) confidence intervals. Time (horizontal axis) is in quarters. "P-val" are for the null hypothesis that the difference between the two impulse responses in each figure is zero for every quarter plotted. See section 5 for details.

APPENDIX FIGURE 12: DISTRIBUTIONAL EFFECTS OF SHOCKS IDENTIFIED FROM FED FUNDS FUTURES.



Notes: the top panel shows responses of standard deviation of measures of income and consumption to monetary policy shocks identified from changes in fed funds futures around FOMC announcements. This series of monetary policy shocks is taken from Gorodnichenko and Weber (2016). The bottom panel shows responses of standard deviation of measures of income and consumption to monetary policy shocks identified as in Romer and Romer (2004). For all panels, the estimation sample is 1994Q1-2008Q4. Time (horizontal axis) is in quarters. The figure plots one and 1.65 standard deviation confidence intervals as dark and light grey shaded areas respectively. “p-val” are for the null hypothesis that the impulse response is zero for every quarter plotted.

APPENDIX FIGURE 13: RESPONSE OF CEX AND NIPA CONSUMPTION TO A CONTRACTIONARY MONETARY POLICY SHOCK.



Notes: the figure plots impulse response of CEX consumption (see the text for the definition; solid blue line) and NIPA's private spending on non-durables (solid, red line) to one percentage point contractionary monetary policy shock identified as in Romer and Romer (2004). The estimation sample is 1980Q1-2008Q4. Time (horizontal axis) is in quarters. The figure plots one standard deviation confidence intervals (66% coverage) as dashed lines. See section 3.1 for details.

APPENDIX TABLE 1: CORRELATIONS AND VOLATILITIES OF INEQUALITY MEASURES

Panel A: Correlations across Inequality Measures			
	Corr(SD,Gini)	Corr(SD,90 th -10 th)	Corr(Gini,90 th -10 th)
Income Inequality	0.90	0.93	0.89
Earnings Inequality	0.64	0.88	0.60
Expenditures Inequality	0.88	0.89	0.75
Consumption Inequality	0.62	0.79	0.43
Panel B: Correlations of Inequality in Income, Salary, Expenditures and Consumption			
	SD	Gini	90 th -10 th
Corr(Income, Earnings)	0.25	0.53	0.19
Corr(Income, Expenditures)	0.32	0.55	0.22
Corr(Income, Consumption)	0.13	0.66	0.04
Corr(Earnings, Expenditures)	0.23	0.47	0.17
Corr(Earnings, Consumption)	-0.08	0.32	-0.04
Corr(Expenditures, Consumption)	0.57	0.79	0.39
Panel C: Volatility of Inequality Measures			
	SD	Gini	90 th -10 th
Income Inequality	0.049	0.017	0.096
Earning Inequality	0.032	0.012	0.108
Expenditures Inequality	0.016	0.011	0.050
Consumption Inequality	0.009	0.008	0.034

Notes: Panel A presents correlation coefficients of inequality in income, earnings, expenditures, and consumption across the different measures of each: SD denotes cross-sectional standard deviation, Gini denotes Gini coefficients, and 90th-10th denotes the log difference between the 90th and 10th percentiles of the cross-sectional distribution. Panel B presents correlation coefficients between each pair of income, earnings, expenditures, and consumption inequality for each approach (SD, Gini or 90th-10th) to measuring inequality. Panel C presents standard deviations of each measure of inequality. All data is from 1980Q1 to 2008Q4.

APPENDIX TABLE 2: DECOMPOSITION OF INCOME BY QUINTILE

Quintiles by consumption of nondurables and services	Share of income source				Ratio of mean consumption of nondurables and services to mean consumption of nondurables and services in the 3 rd quintile
	Labor Earnings	Business	Financial	Other	
	(1)	(2)	(3)	(4)	
Panel A: 1980s					
1	0.352	0.022	0.112	0.515	0.42
2	0.588	0.040	0.112	0.260	0.73
3	0.694	0.057	0.096	0.153	1.00
4	0.762	0.059	0.081	0.098	1.34
5	0.767	0.088	0.078	0.067	2.18
Panel B: 1990s					
1	0.380	0.020	0.106	0.494	0.43
2	0.597	0.040	0.097	0.267	0.73
3	0.704	0.050	0.086	0.160	1.00
4	0.770	0.056	0.071	0.103	1.35
5	0.773	0.082	0.076	0.069	2.27
Panel C: 2000s					
1	0.435	0.019	0.086	0.460	0.43
2	0.653	0.029	0.085	0.234	0.73
3	0.740	0.037	0.072	0.151	1.00
4	0.801	0.042	0.065	0.092	1.36
5	0.812	0.051	0.071	0.065	2.32

Notes: The table presents a decomposition of sources of household income in the CEX by quintile. Households are sorted into quintiles using their consumption levels of nondurables and services. Income categories include labor earnings, business income, financial income, and other sources of income. See section 4.1 in the text for details.

APPENDIX TABLE 3: DECOMPOSITION OF EXPENDITURES AND CONSUMPTION BY QUINTILE

Quintiles by consumption of nondurables and services	Shares in consumption			Selected shares in total spending			Ratio of total spending to consumption of nondurables and services
	Nondurables	Durables	Services	Interest sensitive expenditures	Mortgage payments	Purchases of new vehicles	
	(1)	(2)	(3)	(4)	(5)	(6)	
Panel A: 1980s							
1	0.696	0.053	0.251	0.105	0.017	0.015	1.87
2	0.682	0.080	0.238	0.163	0.041	0.032	1.86
3	0.666	0.097	0.238	0.197	0.062	0.039	1.84
4	0.653	0.104	0.243	0.232	0.081	0.045	1.83
5	0.612	0.111	0.277	0.253	0.084	0.054	1.80
Panel B: 1990s							
1	0.654	0.056	0.289	0.113	0.023	0.016	2.13
2	0.641	0.077	0.282	0.169	0.053	0.032	2.05
3	0.632	0.094	0.274	0.213	0.076	0.040	2.03
4	0.616	0.107	0.277	0.246	0.095	0.045	2.01
5	0.569	0.115	0.316	0.268	0.100	0.052	1.92
Panel C: 2000s							
1	0.634	0.053	0.313	0.121	0.036	0.014	2.24
2	0.623	0.067	0.309	0.181	0.073	0.029	2.12
3	0.619	0.081	0.300	0.216	0.094	0.035	2.09
4	0.602	0.094	0.304	0.254	0.108	0.044	2.08
5	0.543	0.106	0.351	0.278	0.108	0.052	1.99

Note: The table presents a decomposition of consumption and expenditures in the CEX by quintile. Households are sorted into quintiles using their consumption levels of nondurables and services. Consumption includes nondurables, services and durables. Total spending is the sum of consumption and other expenditures, including auto purchases, mortgage payments among others. Interest sensitive spending includes expenditure on new vehicles, furniture and durable housing items, education, durable entertainment, mortgage payments, and mortgage down-payments. See section 4.1 in the text for details.

Appendix A: Cohort Analysis

Consider consumption data collected in the CEX over May 2015 – July 2015. For each survey month we define a cohort: May 2015 (cohort B), June 2015 (cohort C), and July 2015 (cohort A). Cohort A’s survey response covers the months of April, May and June. Cohort B’s survey response covers the months of February, March, and April. Cohort C’s survey response covers the months of March, April and May. Thus, cohort A’s reporting period coincides with the calendar quarter. Cohort B’s reporting period is such that, apart from consumption in the second quarter, the CEX measure of consumption includes 1/3 of consumption from 2015Q2 and 2/3 of consumption from 2015Q1. When households in cohort B are surveyed again in Aug 2015, their reported consumption covers 2/3 of consumption from 2015Q2 and 1/2 of consumption from 2015Q3. In similar spirit, the CEX measure of consumption for Cohort C includes 1/3 of consumption from 2015Q1 and 2/3 of consumption from 2015Q2. When surveyed next time in September 2015, cohort C reports consumption which covers 1/3 of consumption from 2015Q2 and 2/3 of consumption from 2015Q3. As we discussed in the text, BLS splits three-monthly consumption equally across months during this period. The standard practice is to aggregate monthly consumption to quarterly consumption. However, the timing of measurements means that calendar quarterly consumption has a lagging component and a leading component.

This timing can introduce a complex serial correlation structure such that using standard VARs may be problematic: one needs to introduce moving average (MA) terms or use many lags to proxy for the MA terms. However, one can largely circumvent this problem by using direct projections a la Jorda (2005) with a large number of shocks as control variables to allow for flexible shapes of the estimated impulse response functions. As a result, our estimated impulse response functions should be interpreted as estimates of responses averaged across different (monthly) horizons. In other words, the estimated impulse response is a smoothed version of the true impulse response.

To see this intuition more formally, consider the following moving average representation for consumption:

$$\sigma_t = \sum_{s=0}^S \beta_s e_{t-s,RR} + error_t \quad (1)$$

where σ_t is a measure of inequality at time t , $e_{t,RR}$ is the Romer-Romer shock, and $error_t$ is the residual. Note that $e_{t,RR}$ is unanticipated and serially uncorrelated by construction. Shock $e_{t-s,RR}$ is orthogonal to $error_t$ by construction as well. Now suppose that we observe a measure of inequality that is a two-sided moving average of σ_t . This case corresponds to the time aggregation in the CEX when for a given calendar quarter we use consumption from adjacent quarters. Specifically, we assume that $\tilde{\sigma}_t = \sum_{k=-1}^1 \omega_k \sigma_{t+k}$. It follows that

$$\begin{aligned} \tilde{\sigma}_t &= \sum_{k=-1}^1 \omega_k \sigma_{t+k} = \sum_{k=-1}^1 \omega_k \left(\sum_{s=0}^S \beta_s e_{t-s+k,RR} + error_{t+k} \right) \\ &= (\omega_1 \beta_0) e_{t+1,RR} + (\omega_1 \beta_1 + \omega_0 \beta_0) e_{t,RR} + (\omega_1 \beta_2 + \omega_0 \beta_1 + \omega_{-1} \beta_{-1}) e_{t-1,RR} \\ &\quad + (\omega_1 \beta_3 + \omega_0 \beta_2 + \omega_{-1} \beta_1) e_{t-2,RR} + (\omega_1 \beta_4 + \omega_0 \beta_3 + \omega_{-1} \beta_2) e_{t-3,RR} + \dots \\ &\quad + (\omega_1 \beta_S + \omega_0 \beta_{S-1} + \omega_{-1} \beta_{S-2}) e_{t-S+1,RR} + (\omega_0 \beta_S + \omega_{-1} \beta_S) e_{t-S,RR} + \\ &\quad (\omega_{-1} \beta_S) e_{t-S-1,RR} + \sum_{q=-1}^1 \omega_q error_{t+q} \\ &= \sum_{s=-1}^{S+1} \psi_s e_{t-s,RR} + \overline{error}_t \end{aligned} \quad (2)$$

where $\psi_{-1} = \omega_1 \beta_0$, $\psi_0 = \omega_1 \beta_1 + \omega_0 \beta_0$, $\psi_1 = \omega_1 \beta_2 + \omega_0 \beta_1 + \omega_{-1} \beta_{-1}$, $\psi_2 = \omega_1 \beta_3 + \omega_0 \beta_2 + \omega_{-1} \beta_1$, \dots , $\psi_{S-2} = \omega_1 \beta_S + \omega_0 \beta_{S-1} + \omega_{-1} \beta_{S-2}$, $\psi_S = \omega_0 \beta_S + \omega_{-1} \beta_S$, $\psi_{S+1} = \omega_{-1} \beta_S$.

Note that given the properties of shock series $e_{t,RR}$, we still have that $e_{t-s,RR}$ is orthogonal to \overline{error}_t and thus we can estimate specification (2) by OLS. Also note that, while using a moving average measure

of inequality $\tilde{\sigma}_t$ introduces a lead of $e_{t,RR}$, this additional term does not have a material effect in practice. First, users of the Romer-Romer shocks typically impose the restriction that monetary shocks do not have a contemporaneous effect on the real side of the economy, that is, $\beta_0 = 0$, and hence $\psi_{-1} = 0$. Second, even if $\beta_0 \neq 0$, the shocks $e_{t,RR}$ are not serially correlated and therefore excluding leads of shocks from specification (2) does not affect estimates of coefficients on the current and lagged values of shocks. In summary, the impulse response function $\{\psi_s\}_{s=0}^{S+1}$ estimated using specification (2) (this moving average representation corresponds to the direct projection approach of Jorda (2005)) recovers a smoothed version of the impulse response for the corresponding series that is not aggregated across time.

To further explore the importance of the timing for our results, one can change the aggregation of the Romer-Romer shocks to match the reporting frequency for each cohort in the CEX. Appendix Tables A1-A3 show the timing of reported consumption and the Romer-Romer shock series with the corresponding timing. Note that the time period corresponds to the calendar quarter only for Cohort A, while for other cohorts it is shifted by one month and two months relative to the calendar time.

Appendix Table A1. Romer-Romer shocks and measured consumption for cohort A.

Period	Romer-Romer shock, $e_{t,RR}^{(A)}$	CEX Consumption
1	$(e_{2014,Jan} + e_{2014,Feb} + e_{2014,Mar})$	$E_{2014,April}^{(A)}$
2	$(e_{2014,Apr} + e_{2014,May} + e_{2014,Jun})$	$E_{2014,July}^{(A)}$
3	$(e_{2014,Jul} + e_{2014,Aug} + e_{2014,Sep})$	$E_{2014,Oct}^{(A)}$
4	$(e_{2014,Oct} + e_{2014,Nov} + e_{2014,Dec})$	$E_{2015,Jan}^{(A)}$
5	$(e_{2015,Jan} + e_{2015,Feb} + e_{2015,Mar})$	$E_{2015,Apr}^{(A)}$
6	$(e_{2015,Apr} + e_{2015,May} + e_{2015,Jun})$	$E_{2015,Jul}^{(A)}$
7	$(e_{2015,Jul} + e_{2015,Aug} + e_{2015,Sep})$	$E_{2015,Oct}^{(A)}$
8	$(e_{2015,Oct} + e_{2015,Nov} + e_{2015,Dec})$	$E_{2016,Jan}^{(A)}$
9	$(e_{2016,Jan} + e_{2016,Feb} + e_{2016,Mar})$	$E_{2016,Apr}^{(A)}$
10	$(e_{2016,Apr} + e_{2016,May} + e_{2016,Jun})$	$E_{2016,Jul}^{(A)}$
11	$(e_{2016,Jul} + e_{2016,Aug} + e_{2016,Sep})$	$E_{2016,Oct}^{(A)}$
12	$(e_{2016,Oct} + e_{2016,Nov} + e_{2016,Dec})$	$E_{2017,Jan}^{(A)}$

Appendix Table A2. Romer-Romer shocks and measured consumption for cohort B.

Period	Romer-Romer shock, $e_{t,RR}^{(B)}$	CEX Consumption
1	$(e_{2014,Feb} + e_{2014,Mar} + e_{2014,Apr})$	$E_{2014,May}^{(B)}$
2	$(e_{2014,May} + e_{2014,Jun} + e_{2014,Jul})$	$E_{2014,Aug}^{(B)}$
3	$(e_{2014,Aug} + e_{2014,Sep} + e_{2014,Oct})$	$E_{2014,Nov}^{(B)}$
4	$(e_{2014,Nov} + e_{2014,Dec} + e_{2015,Jan})$	$E_{2015,Feb}^{(B)}$
5	$(e_{2015,Feb} + e_{2015,Mar} + e_{2015,Apr})$	$E_{2015,May}^{(B)}$
6	$(e_{2015,May} + e_{2015,Jun} + e_{2015,Jul})$	$E_{2015,Aug}^{(B)}$
7	$(e_{2015,Aug} + e_{2015,Sep} + e_{2015,Oct})$	$E_{2015,Nov}^{(B)}$
8	$(e_{2015,Nov} + e_{2015,Dec} + e_{2016,Jan})$	$E_{2016,Feb}^{(B)}$
9	$(e_{2016,Feb} + e_{2016,Mar} + e_{2016,Apr})$	$E_{2016,May}^{(B)}$
10	$(e_{2016,May} + e_{2016,Jun} + e_{2016,Jul})$	$E_{2016,Aug}^{(B)}$
11	$(e_{2016,Aug} + e_{2016,Sep} + e_{2016,Oct})$	$E_{2016,Nov}^{(B)}$
12	$(e_{2016,Nov} + e_{2016,Dec} + e_{2017,Jan})$	$E_{2017,Feb}^{(B)}$

Appendix Table A 3. Romer-Romer shocks and measured consumption for cohort C.

Period	Romer-Romer shock, $e_{t,RR}^{(C)}$	CEX Consumption
1	$(e_{2014,Mar} + e_{2014,Apr} + e_{2014,May})$	$E_{2014,Jun}^{(C)}$
2	$(e_{2014,Jun} + e_{2014,Jul} + e_{2014,Aug})$	$E_{2014,Sep}^{(C)}$
3	$(e_{2014,Sep} + e_{2014,Oct} + e_{2014,Nov})$	$E_{2014,Dec}^{(C)}$
4	$(e_{2014,Dec} + e_{2015,Jan} + e_{2015,Feb})$	$E_{2015,Mar}^{(C)}$
5	$(e_{2015,Mar} + e_{2015,Apr} + e_{2015,May})$	$E_{2015,Jun}^{(C)}$
6	$(e_{2015,Jun} + e_{2015,Jul} + e_{2015,Aug})$	$E_{2015,Sep}^{(C)}$
7	$(e_{2015,Sep} + e_{2015,Oct} + e_{2015,Nov})$	$E_{2015,Dec}^{(C)}$
8	$(e_{2015,Dec} + e_{2016,Jan} + e_{2016,Feb})$	$E_{2016,Mar}^{(C)}$
9	$(e_{2016,Mar} + e_{2016,Apr} + e_{2016,May})$	$E_{2016,Jun}^{(C)}$
10	$(e_{2016,Jun} + e_{2016,Jul} + e_{2016,Aug})$	$E_{2016,Sep}^{(C)}$
11	$(e_{2016,Sep} + e_{2016,Oct} + e_{2016,Nov})$	$E_{2016,Dec}^{(C)}$
12	$(e_{2016,Dec} + e_{2017,Jan} + e_{2017,Feb})$	$E_{2017,Mar}^{(C)}$

Once the timing of shocks is aligned for each cohort, we can estimate the impulse response of inequality to monetary shocks as a system of equations:

$$\Delta\sigma_{t+h}(C^{(A)}) = \sum_{k=1}^K \alpha_k^{(h)} \Delta\sigma_{t-k}(C^{(A)}) + \sum_{s=0}^S \beta_s^{(h)} e_{t-s,RR}^{(A)} + error_{t,h}^{(A)}, \quad h = 0, \dots, H$$

$$\Delta\sigma_{t+h}(C^{(B)}) = \sum_{k=1}^K \alpha_k^{(h)} \Delta\sigma_{t-k}(C^{(B)}) + \sum_{s=0}^S \beta_s^{(h)} e_{t-s,RR}^{(B)} + error_{t,h}^{(B)}, \quad h = 0, \dots, H$$

$$\Delta\sigma_{t+h}(C^{(C)}) = \sum_{k=1}^K \alpha_k^{(h)} \Delta\sigma_{t-k}(C^{(C)}) + \sum_{s=0}^S \beta_s^{(h)} e_{t-s,RR}^{(C)} + error_{t,h}^{(C)}, \quad h = 0, \dots, H$$

where each equation corresponds to a cohort, h indexes horizon in the direct projection, $\sigma_t(C^{(X)})$ is a measure of inequality for time t and cohort X , $e_{t,RR}^{(X)}$ is the value of the Romer-Romer shock at time t calculated for cohort X . The impulse response is calculated as cumulative sum of $\{\hat{\beta}_0^{(h)}\}_{h=0}^H$. Note that the slopes $\{\alpha_k^{(h)}\}$ and $\{\beta_s^{(h)}\}$ are the same across cohorts (equations). This restriction is aimed to increase the precision of estimates.

Also note that the correct inference must take into account the serial and cross-sectional correlation of the error terms. This issue is addressed by using Driscoll and Kraay (1998) standard errors that allow for arbitrary serial and cross-sectional correlation of errors.

The downside of this approach is that we use only a third of the sample to compute a measure of inequality for a given quarter. As a result, inequality measures calculated for each cohort separately are noisier than the corresponding inequality measured calculated for the whole sample.

Appendix B: CEX Data Appendix

This section describes the construction of the Consumer Expenditure data in more detail. For years 1980 to 2005 we compile the data directly from the raw ASCII files available from the Inter-university Consortium for Political and Social Research (ICPSR). From year 2006 on we use the public-use microdata provided by the Bureau of Labor Statistics (BLS). All expenditure data is aggregated up from the disaggregated MTAB files (adding ITAB files where necessary; e.g., occupational expenses before 2001Q1), and income data is derived from the FMLY files. Additional information from the MEMB files is used in the tax imputation procedure outlined below, such as the number of qualifying dependents, etc.

As recommended by the BLS, we sum expenditures that occur in the same month but are reported in different interviews. We then drop the fourth and higher observation for household-interviews with more than three monthly observations. These latter observations appear to be outliers relative to the reported expenditures for the first three months. We also drop households that report zero expenditure on food in any interview (adding both food at home and food away from home). Finally, we drop the few households that report negative expenditures for categories that cannot be negative according to the data codebook, such as expenditures for elderly care. Appendix Table 1 shows the construction of the sample.

We correct sample breaks due to slight changes in the questionnaire of the following variables: food at home (1982Q1-88Q1), food away from home (2007Q2), personal care services (2001Q2), occupation expenditures (2001Q2), and property taxes (1991Q1). In particular, we regress each expenditure series on a time trend and indicators for the corresponding sample breaks. For instance, we regress expenditures on food at home on a time trend and a dummy for the period 1982Q1-87Q4. We then subtract from the original series the effect of the dummies.

The BLS began imputing income in 2004 but did not impute previous years. Furthermore, non-imputed income values are not available for years 2004 and 2005. We therefore follow Fisher, Johnson and Smeeding (2013) and replicate the BLS methodology as closely as possible to impute all income prior to 2004. For respondents who refused to provide an exact dollar amount but instead provided an answer from a bracketed range, we use the mid-point of the bracket. We then impute the remaining missing income observations (i.e. "invalid blanks") using annual regressions of income on age and age squared of the reference person, fixed effects for the income reporting date, and a fully saturated model of the following categorical variables: the reference person's gender, race, education, number of weeks worked full or part time in the last 12 month; unadjusted family size; the number of children less than 18; the number of persons over 64; and the number of earners. All regressions use sampling weights. To account for the sampling uncertainty, we add residuals drawn randomly with replacement from the sampling distribution to the predicted values. We then trim values above the top-coding threshold at the top coding value.

Finally, since self-reported taxes are of low quality, we follow the recommendation of the BLS and impute tax liabilities based on the higher quality income data and household demographics. In particular, we impute taxes for each household in the survey using the NBER TAXSIM calculator. We use an iterative procedure determining the itemization status of each household in a first step in order to account for deductions that depend on the household's adjusted gross income (AGI); for example health care or job expenses. We then use the household's inferred AGI together with its filing status and demographics to impute its final tax liabilities. The code is available at www.nber.org/~taxsim/to-taxsim/cex-kueng/cex.do.

We aggregate spending to the (calendar) quarterly frequency from the monthly frequency. While the resulting measures introduces a moving average structure, the resulting series maximizes the sample

used for calculating inequality. As we discuss in Appendix A, results are similar when we use three-monthly frequency that does not coincide with calendar quarters for some households.

When we compute inequality measures, we censor each spending and income series at the corresponding values of the top and bottom percentiles. Note that for aggregated spending/income series, we first aggregate and then apply censoring.

To calculate residual inequality, we control for: 1) quartic age polynomial; 2) six educational attainment dummy variables; 3) a set of dummy variables for each household size; 4) a set of dummy variables for each number of children; 5) a set of dummy variables for race; 6) a set of dummy variables for the number of earners. In additional checks, we also control for the number of interview (a proxy for how complete a survey is) and/or exclude observations with incomplete income responses.

To adjust for differences in household size, we also use the OECD scale. Specifically, the (effective) number of household members is calculated as follows: $(\text{head of household}) + 0.7 * (\text{number of adults [18 years old or older]} - 1) + 0.5 * (\text{number of children})$.

Because the composition of households changes over time, we calculate changes in equality on the sample on households present in both periods. For example, when we calculate the change in Gini inequality from say 2001Q1 to 2001Q2, we do it only for households that are present in 2001Q1 and 2001Q2.

We use X-12 to seasonally adjust all inequality and transition probability series.

Appendix Table 1. Construction of the final sample.

Initial sample		Relative to initial sample		Relative to previous step	
households	observations	households	observations	households	observations
260,190	2,497,623	-	-	-	-
Drop if spending on elderly care is negative					
260,189	2,497,587	100.00%	100.00%	100.00%	100.00%
Drop observations with zero total expenditures.					
260,176	2,289,895	99.99%	91.68%	100.00%	91.68%
Sum expenditures that occur in the same month but are reported in different interviews as recommended by the BLS; see e.g. Souleles (JPubE 2002,p.119). Less than 1% of all observations are affected.					
260,176	2,282,729	99.99%	91.40%	100.00%	99.69%
Drop households that report more than 4 monthly expenditures per interview, since it is difficult to allocate the additional monthly expenditures. This is recommended by the BLS; less than 1% of all observations are affected.					
256,997	2,252,050	98.77%	90.17%	98.78%	98.66%
Drop interviews with less than 3 months of data. Note: Only about 30 of all observations are affected.					
256,990	2,252,022	98.77%	90.17%	100.00%	100.00%
Drop households that report zero consumption in any interview. Less than 1% of all observations are affected.					
254,658	2,232,906	97.87%	89.40%	99.09%	99.15%
Final sample: Combine with income sample (FMLY and MEMB)					
254,653	2,232,888	97.87%	89.40%	100.00%	100.00%